



**SU·POR<sup>®</sup>**

2025 EDITION | V.1

## **SU-POR® SURGICAL IMPLANTS**

Su-Por® Surgical Implants offer surgeons a growing array of solutions for reconstruction and augmentation. Made from biocompatible porous polyethylene, Su-Por features an interconnecting, omnidirectional pore structure that promotes fibrovascular ingrowth and integration with patient tissue.

With over 250,000 successful procedures and more than 1,000 publications supporting the use of porous polyethylene as an implant material, Su-Por is backed by extensive research across diverse medical fields, including craniofacial reconstruction, oculoplastic, and aesthetic applications.

Su-Por® is designed for ease of use, allowing surgeons to achieve precise customization. The material can be trimmed, carved, and feathered with a blade in the sterile field during surgery to ensure an optimal final fit.

Su-Por® can be easily drilled and securely fixated, accommodating screws and plates without risk of cracking. This provides surgeons with greater flexibility in fixation options and placement.

Su-Por® Biomaterial features advanced Retained Shape Memory™, a unique property that enables the implant to maintain its form after being contoured and shaped.

## **PROVEN & SAFE**

The material used in the production of Su-Por® Implants has been extensively tested and proven safe for the human body. Each implant is delivered sterile by Ethylene Oxide and batch-tested for bacterial endotoxin levels.

Su-Por® Surgical Implants have been globally distributed for over 10 years, with post-market surveillance demonstrating an infection rate of under 0.5%

These implants are long-term, non-resorbing, and appropriate for all age groups.

## **BETTER FOR SURGEONS AND PATIENTS**

Su-Por® Patient-Specific Implants (PSI) offer surgeons an individualized alternative to off-the-shelf implants.

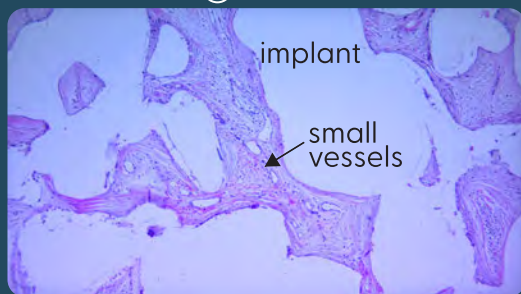
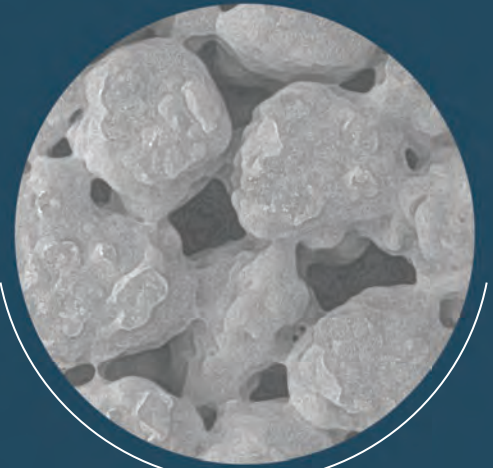
Poriferous® PSI services provide implants tailored to a patient's specific requirements. Using CT scan data, a 3D model of the patient's unique anatomy, both bony and soft tissue, is created, allowing PSI implants to be precisely shaped to fit the defect or correct an asymmetry.

# INTEGRATION

## Unmatched Clinical Performance

The implant's open-pore structure preserves the intricate features essential for natural tissue integration, achieved through precise manufacturing.

Once fully integrated, the Su-Por<sup>®</sup> implant develops an internal blood supply that supports overlying tissues and resists the formation of a fibrovascular capsule. This bond to surrounding tissues ensures long-term stability and reduces the risk of infection or migration.



# IMPLANT PREPARATION

Su-Por® porous polyethylene implants are provided sterile and pyrogen-free for single-patient use. **Do not resterilize.** Keep the implant in its packaging until the time of implantation.



Operating room personnel must wear clean, powder-free gloves when handling the implant, maintaining strict aseptic technique to avoid contamination.

Upon opening the inner pouch, immediately place the implant in a sterile saline solution with antibiotics of the surgeon's preference.

Avoid contact with surgical drapes, clothing, or any material that could introduce lint or particulate matter. Handle the implant only with clean, powder-free gloves.

Always place the implant in sterile saline to prevent contamination when handling or temporarily setting the implant aside. The syringe method may be used for smaller implants, but a sterile basin will be needed for larger implants.

Following these steps ensures the implant remains sterile and ready for successful surgical application.



## IMPLANT ANTIBIOTIC PREPARATION PROCESS

- Prepare antibiotic solution.
- Select syringe to fit implant size.
- Remove plunger and place implant inside.
- Pull back on plunger, fill the syringe until implant is covered.
- Place a gloved finger over the end of the syringe. Pull the plunger outwards, creating a vacuum.
- Continue to pump back on plunger until no air bubbles emerge from the implant.
- Open syringe and remove soaked implant.



**Do not use with antiseptic, betadine, or any other cytotoxic solutions.**



Su-Por implants are easily cut and sculpted with scissors or a scalpel.

Thicker implants can be shaped using bone cutters or cutting burrs to adapt to the surgical site.

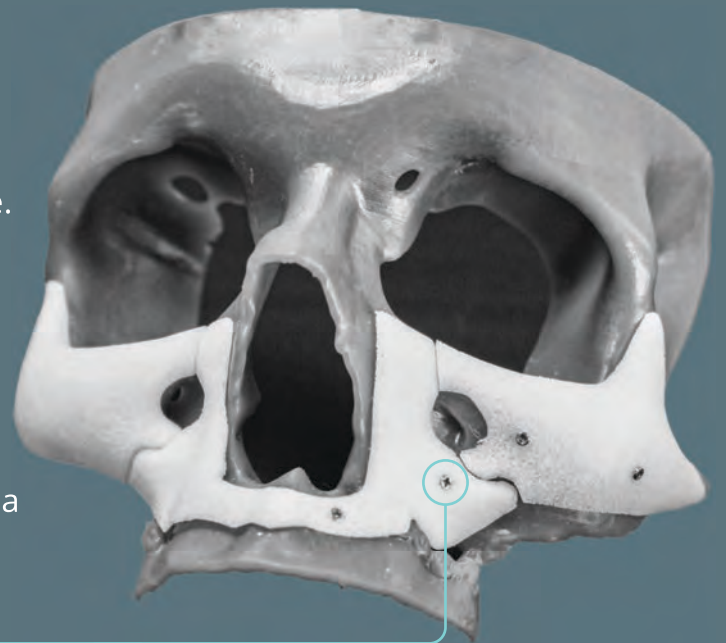
Multiple pieces can be sutured together for larger or thicker implants.

After shaping, rinse the implant in sterile saline solution to remove all loose particles.

To prevent movement before tissue ingrowth, implants can be secured using sutures, surgical screws, or K-wire. A cutting needle can penetrate the implant surface to re-suspend tissue or muscle.

For screw fixation, tighten screws to compress the implant to the bone, ensuring the screw heads are flush with the implant surface to minimize the profile.

Once stabilized, final modifications can be made in situ by shaping and feathering the edges to create a smooth transition and reduce palpability. Remove all carved debris from the surgical site to maintain cleanliness.



## THERMAL SHAPING

Submerge the implant in a hot, sterile saline bath (82°–100°C, 180°–212°F) to increase flexibility for shaping. If the implant cools and stiffens, return it to the hot saline. Once shaped, hold the implant in the desired form and allow it to cool. A cold, sterile bath may be used to speed cooling. Repeat as needed for further adjustments.

Scan for an  
in-depth  
demonstration

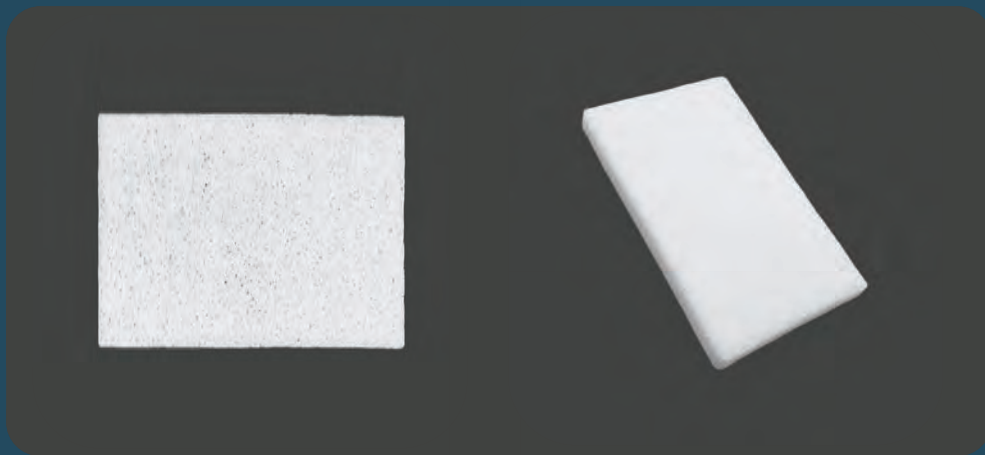


# SHAPE AND CONTOUR

- Mraček, MD, PhD, Jan; P. Ríchtr; M. Seidl; J. Dostal; R. Tupy; V. Pyibay. (2021) Dilation of the scalp with subcutaneous expanders before secondary computer modeled cranioplasty from porous polyethylene Czech and Slovak Neurology and Neurosurgery 2022 Pages 92-95
- Wallace, MD, Robert D.; Safak Uygur, MD; Petros Konofaos, MD, PhD; and Paul Klimo Jr. MD, MPH. (2023) Repair of Congenital Enlarged Parietal Foramina with Porous Polyethylene Implants The Journal of Craniofacial Surgery, Volume 34, Number 5, July/ August 2023 Pages 1548-1549 Mutaz B. Habal, MD
- Arnon, Roei, Offer Gluck, Halit Winter, Joseph Winter, Joseph Pikkell, Avi Rubinov. (2019) Combined Single-Step Procedure for Correction of Silent Sinus Syndrome Case Reports in Ophthalmology March 19, 2019 Pages 95-100 S. Karger AG, Basel www.karger.com/cop
- Burnstine, Michael A. (2019) Minimally Invasive Su-Por Suture Temporal Brow Suspension: The Lift and Fill Technique. Ophthalmic Plastic Surgery of the Upper Face 04.06.2019 Pages 81-85.
- Chiou, MD, Carolina A.; Thad W. Vickery, MD; Edith R. Reshef, MD; Benjamin S. Bleier, MD; and Suzanne K. Freitag, MD. (2023) Endonasal Endoscopic Approach to Orbital Tumors International Ophthalmology Clinics, Volume 63.
- Eder, Adrianna E, Sarah A Avila, Jordan Malenke, John M. Del Gaudio, and Ted Wojno. (2023) Intraosseous hemangioma of the orbit: A case report involving pre-operative embolization with reconstruction using a custom porous polyethylene implant The International Journal on Orbital Disorders, Oculoplastic and Lacrimal Surgery 27 March 2023, Taylor & Francis Group, LLC. <https://doi.org/10.1080/01676830.2023.2192778>
- Habib, Larissa A., Michael K. Yoon. (2021) Patient Specific implants in orbital reconstruction: A pilot study American Journal of Ophthalmology Case Reports 19 October 2021 Elsevier Inc. <https://doi.org/10.1016/j.ajoc.2021.101222>
- Johnson, Thomas E. (2020) Anophthalmia: The Expert's Guide to Medical and Surgical Management 1st ed. 2020 Edition Springer December 24, 2019 100 – 101
- Parikh, Alomi O.; Margaret L. Pfeiffer; Cindi K. Yim; Michael A. Burnstine. (2023) Implants and spacers for paralytic ectropion: Literature review and assessment of a thin-profile porous polyethylene implant Indian Journal of Ophthalmology 2022 Wolters Kluwer – Medknow www.ijo.in DOI: 10.4103/ijo.IJO\_885\_22
- Piombino, Pasquale, Stefania Troise, Fabio Maglitto, Simona Barone, Lorenzo Sani, Umberto Committeri, Giovanna Norino, Paola Bonavolonta, Giovanni Salzano, Luigi Angelo Vaira, Giacomo De Riu, and Luigi Califano. (2022) Management of Orbital Floor Fractures: Our Experience in 10 Years Indian Journal of Otolaryngology and Head & Neck Surgery, Oct – Dec 2022, Pages 547-554 Association of Otolaryngologists of India 2022, Springer Nature <https://doi.org/10.1007/s12070-022-03127-9>
- Prat, Daphna Landau; Said Massarwa, Assa Zohar, Ayelet Priel, Oded Sagiv, Ofira Zloto & Guy J. Ben Simon (2023) Patient – Specific Orbital Implants vs. Pre-Formed Implants for Internal Orbital Reconstruction Seminars in Ophthalmology 13 January 2023 Taylor & Francis Group <https://doi.org/10.1080/08820538.2023.2166353>
- Sun, Yiyu; Gaoyang Wu, Zhaohua Jiang, Weigang Cao, Sheingi Li, Tingting Dai. (2022) Novel method for correcting cephalic rotation in Asian nasal tip plasty Journal of Plastic, Reconstructive & Aesthetic Surgery 2022 British Association of Plastic, Reconstructive and Aesthetic Surgeons Pages 315-321 <https://doi.org/10.1016/j.bjps.2022.10.003>
- Walton, MD, FACS, Robert L.; Rosemary Seelaus, MAMS, CCA; and Brent R. Robinson, MD. (2019) Subtotal Nasal Reconstruction Using a Custom 3-Dimensional Porous Polyethylene Construct The American Society of Plastic Surgeons Plastic Reconstruction Surgery Global Open 11 December 2019 Wolters Kluwer Health, Inc.
- Bonilla, MD, Arturo. (2018) Pediatric Microtia Reconstruction with Autologous Rib: Personal Experience and Technique with 1000 Pediatric Patients with Microtia Facial Plast Surg Clin N Am 26 2018 Pages 57-68 <https://doi.org/10.1016/j.fsc.2017.09.008>
- Johns, PhD, ABPP, Alexis L.; Daniel D. Im, MD; and Sheryl L. Lewin, MD. (2017) Early Familial Experiences with Microtia: Psychosocial Implications for Pediatric Providers Sage Journals September 29, 2017 <https://journals.sagepub.com/doi/10.1177/0009922817734358>
- Lewin, Sheryl. (2015) Complications after Total Porous Implant Ear Reconstruction and Their Management Atlas of Operative Craniofacial Surgery 2015 Pages 617-625 Georg Thieme Verlag KG, Thieme Medical Publishers <https://www.thieme-connect.com/products/ejournals/html/10.1055/s-0035-1567890>
- Lewin, MD, Sheryl; Rachel Bishop, DDS, MD; Jennifer E. Woerner, DMD, MD; David Yates, DMD, MD. (2021) Three Techniques for Reconstruction of Congenital Microtia: Porous Implant Ear Reconstruction, Auricular Reconstruction Using Autologous Rib, and Osseointegrated Craniofacial Implants with Auricular Prosthesis Atlas Oral Maxillofacial Surgery Clinic
- Stephan, Scott, MD; and John Reinisch, MD. (2018) Auricular Reconstruction using Porous Polyethylene Implant Technique Facial Plast Surg Clin N Am 26 Pages 69 – 85 Elsevier Inc. <https://doi.org/10.1016/j.fsc.2017.09.009>
- Pham, R. "Asian Nasal Dorsal Augmentation." Aesthetics and Refractive Surgery Medical Center. September 8, 2022. Lecture.
- Burnstine, M. et. al. "Lateral Eyebrow Elevation with Su-Por AIRO BROW." Keck Medicine of USC. USC Roski Eye Institute. April 13th, 2020. Poster.
- Ben Simon, G. et. al. "Custom Made Orbital Implants." Goldschleger Eye Institute. Shiba Medical Center. June 18, 2018. Lecture.
- Landau, D. "Patient Specific Orbital Implants." Israeli Oculoplastic Society and Pediatric Ophthalmology Society Joint Meeting. Goldschleger Eye Institute. Chaim Sheba Medical Center. August 3, 2023. Lecture

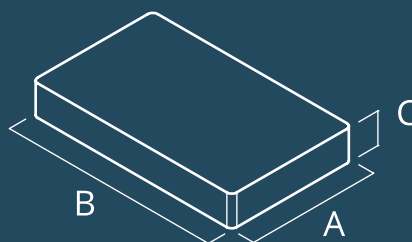
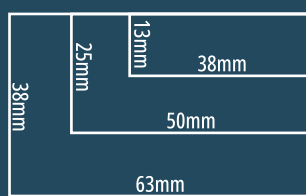
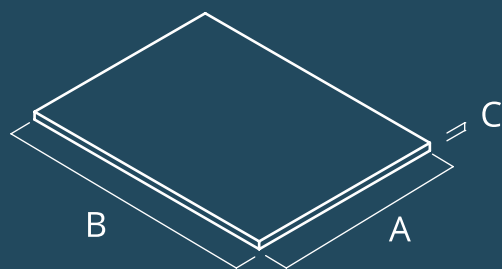
# BIBLIOGRAPHY

# SHEET AND BLOCK



The Su-Por Sheet is designed to save the time and expense associated with harvesting graft material for craniofacial reconstruction and augmentation.

The Su-Por Block is thicker and allows for carving within the sterile field to obtain contours individualized for the surgical situations.



## SU-POR Sheet

CAT#	A	B	C
4001	38	50	0.25
4002	50	76	0.25
4003	38	50	0.35
4004	50	76	0.35
4005	30	50	0.4
4006	38	50	0.45
4007	50	76	0.45
4008	38	50	0.85
4009	50	76	0.85
4012	38	50	1.5
4013	50	76	1.5
4015	38	50	3

EXCLUSIVE PRODUCT

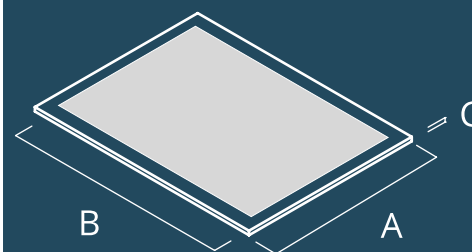
## SU-POR Block

CAT#	A	B	C
4019	13	38	3
4020	25	50	3
4021	38	63	3
4022	13	38	6
4023	25	50	6
4024	38	63	6
4025	13	38	9.5
4026	25	50	9.5
4027	38	63	9.5

# MEMBRANE SHEET



The Su-Por Membrane Sheet is designed to save the time and expense associated with harvesting graft material for orbital floor reconstruction and augmentation. The implant has a composite structure, comprised of a porous layer heat-bonded to a nonporous, non-integrating plate.



PATENTED\*

## SU-POR Membrane Sheet

CAT#	A	B	C
4231	38	50	0.6
4016	38	50	1.0
4241	38	50	1.6
4017	50	76	1.0
4018	50	76	1.6

# TABLE OF CONTENTS

**CRANIAL..... 08**

**ORBITAL..... 14**

**FACIAL..... 22**

**PATIENT-  
SPECIFIC..... 34**

The image features a dark teal background with several overlapping, organic, light teal shapes that resemble stylized human figures or abstract forms. The word "CRANIAL" is written in a large, bold, white, sans-serif font, oriented vertically on the right side of the image.

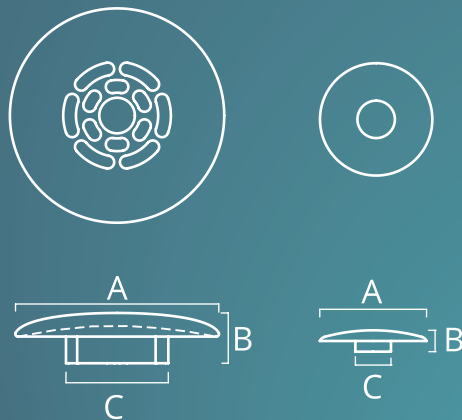
**CRANIAL**

## BURR HOLE COVER



The Burr Hole Cover is designed to fit into and over holes made by a cranial perforator. It provides fixation while re-establishing healthy communication of the cancellous bone layer from the cranium to the replaced bone flap.

Easily contoured using burr or scalpel for cosmetic appearance for smooth transition to bone.

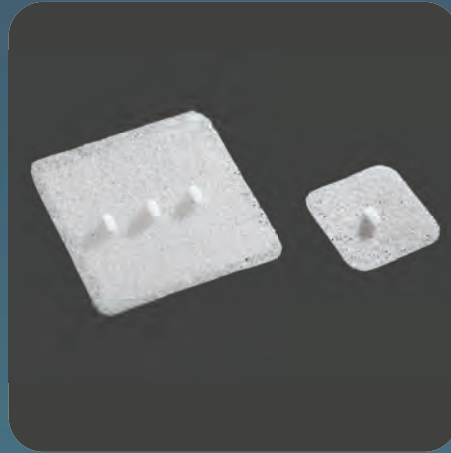


EXCLUSIVE PRODUCT

### SU-POR Burr Hole Cover

CAT#	DESCRIPTION	A	B	C
4130	Small - Qty 3	15	3	5
4131	Large - Qty 3	29	7	14
4589	Small - Qty 1	15	3	5
4590	Large - Qty 1	29	7	14

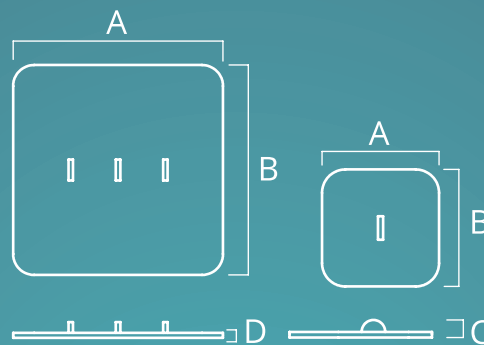
## SELLAR FLOOR



The Su-Por Sellar Floor is designed for sellar floor repair following a transsphenoidal approach to the pituitary.

The Sellar Floor Implant comes in two sizes and configurations: The large Sellar Floor Implant features three tabs for ease of handling and placement. The regular Sellar Floor version has a single tab.

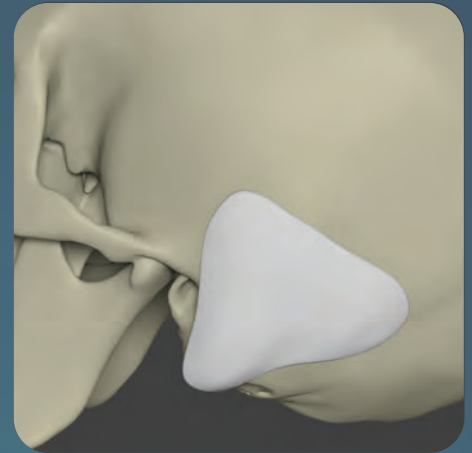
The large Sellar Floor Implant has a nonporous polyethylene sheet bonded to its posterior surface, functioning as a barrier to prevent tissue ingrowth.



### SU-POR Sellar Floor

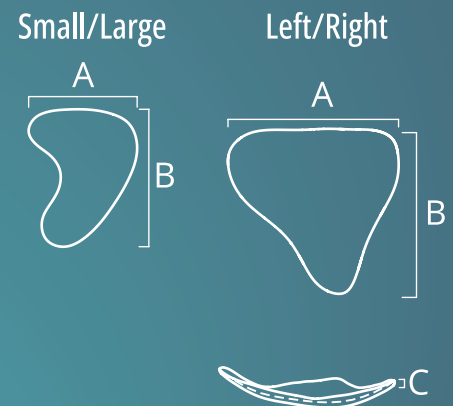
CAT#	DESCRIPTION	A	B	C	D
4126	Regular	20	20	2.5	0.45
4129	Large + Membrane	40	40	2.5	0.73

## MASTOID



The Mastoid provides surgeons with an excellent option for the repair of defects following removal of bone in the mastoid area.

The Mastoid is available in left and right configurations, while the large and small sizes provide a universal fit. The implant should be trimmed at the time of surgery, ensuring the edges of the implant overlap the defect area and meet the specific needs of the patient.



EXCLUSIVE PRODUCT

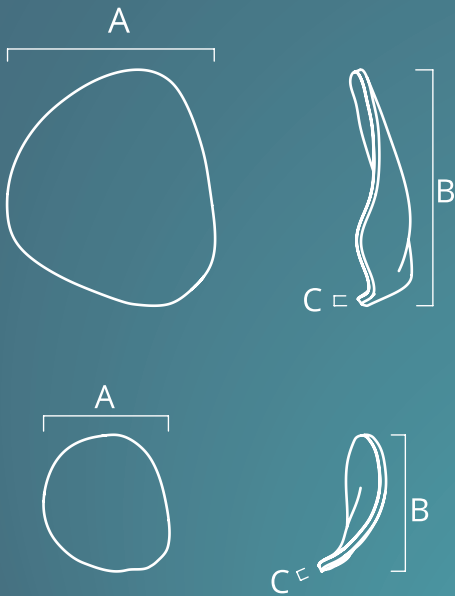
### SU-POR Mastoid

CAT#	DESCRIPTION	A	B	C
4132	Small	36	45	1.5
4133	Large	55.2	63	1.0
4124	Left	56	53.3	1.5
4125	Right	56	53.3	1.5

## RETROSIGMOID



The Retrosigmoid Implant is an excellent option for use after a suboccipital craniotomy. The nonporous membrane layer on the dura-side reduces the potential for dural adhesion. The implant is designed to be trimmed to meet the needs of the individual patient and overlap the defect.

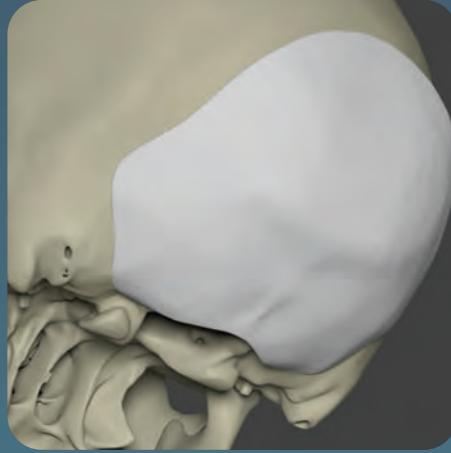


EXCLUSIVE PRODUCT

### SU-POR Retrosigmoid

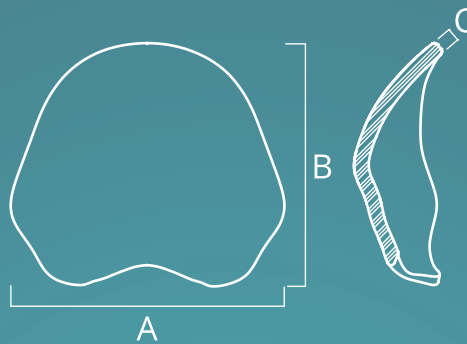
CAT#	DESCRIPTION	A	B	C
4562	Low Profile - Right	29	35	0.85
4563	Low Profile - Left	29	35	0.85
4564	Low Profile - LgRight	52.6	58	0.85
4565	Low Profile - LgLeft	52.6	58	0.85

## OCCIPITAL



The Occipital Implant provides a reconstructive option for large cranial defects. The Occipital Implant also provides an alternative to customized implants, grafts, and other implant materials.

This implant approximates shape of the occipital region while allowing the surgeon to bend and trim implant to meet the needs of the individual patient.

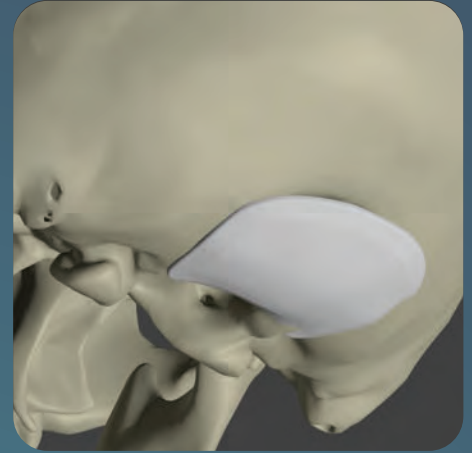


EXCLUSIVE PRODUCT

### SU-POR Occipital

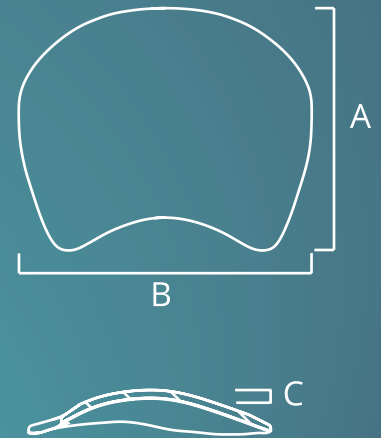
CAT#	DESCRIPTION	A	B	C
4439	Regular	114	101	6

## POSTERIOR FOSSA PLATE



The Posterior Fossa Plate is designed to restore the cranium following posterior fossa craniotomies by providing closure.

The thin design of the implant allows for easier closure of the soft tissue and galea while the nonporous membrane layer on the dura-side reduces the potential for dural adhesion.

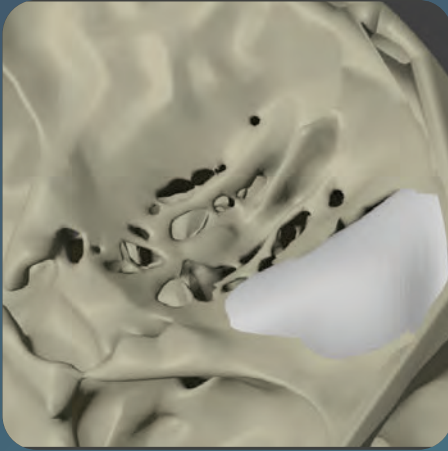


EXCLUSIVE PRODUCT

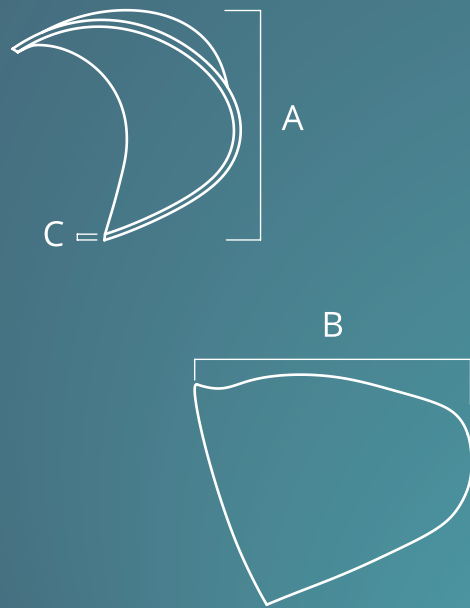
### SU-POR Posterior Fossa Plate

CAT#	DESCRIPTION	A	B	C
4459	Medium	40	47	1.6
4460	Large	45	55	1.6
4471	Extra Large	54	66	1.6

## ORBITO-ZYGOMATIC



The Orbito-Zygomatic is designed for reconstruction of the superior and lateral surfaces of the orbital roof removed during cranial procedures.



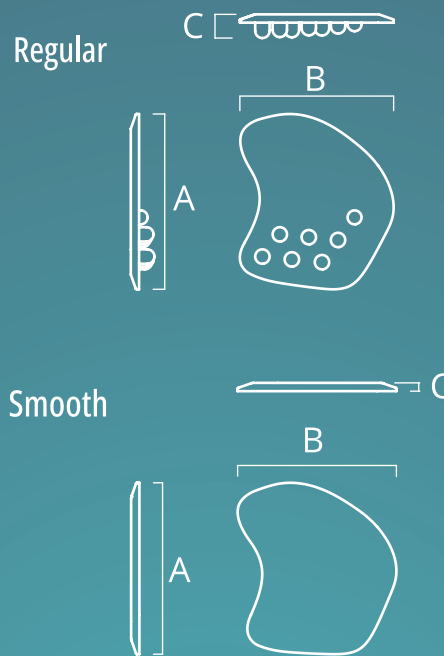
### SU-POR Orbito-Zygomatic

CAT#	DESCRIPTION	A	B	C
4072	Left	33	38	0.8
4073	Right	33	38	0.8

## PTERIONAL



The Pterional is designed to correct temporal hollowing in patients who have had surgery involving the pterional approach to the brain. The implant is placed deep to the temporalis during closure.



### SU-POR Pterional

CAT#	DESCRIPTION	A	B	C
4122	Left	44	43	6
4123	Right	44	43	6
4467	Smooth - Left	46.3	43	2.25
4468	Smooth - Right	46.3	43	2.25

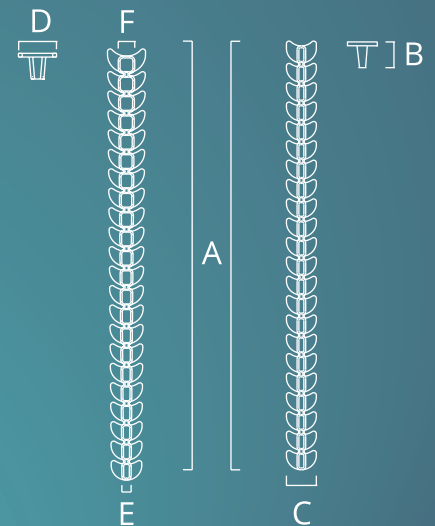
## OSTEOTOMY GAP FILLER



The Osteotomy Gap Filler is easy to work with for reconstructing bone gaps and produces excellent cosmetic results.

Fibrovascular and bony ingrowth makes the implant stable, providing blood supply to the insulated bone flap's cancellous layer.

The Osteotomy Gap Filler may eliminate the complication of using reclaimed bone dust from the patient for cranial gap closing.

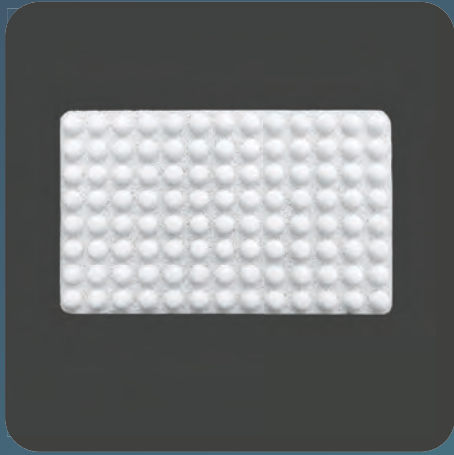


**PATENT PENDING**

### SU-POR Osteotomy Gap Filler

CAT#	DESCRIPTION	A	B	C	D	E	F
4509	Tapered, 1ea	102	6	7	9	2.25	4
	Straight, 1ea	102	6	7	NA	2.25	NA

## FLEX SHEET



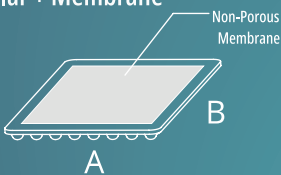
The Flex Sheet is designed for small to medium sized cranial defects and deformities.

It has a smooth exterior surface and a series of pedicles on the interior surface that are designed to provide volume and flexibility. The Flex Sheet is available with and without a membrane layer, allowing the surgeon to selectively prevent tissue ingrowth, if desired.

### Regular



### Regular + Membrane

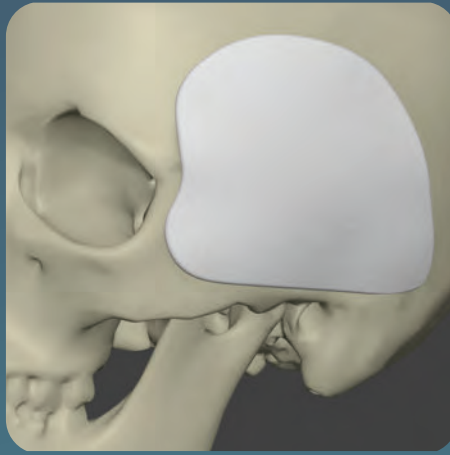


EXCLUSIVE  
PRODUCT

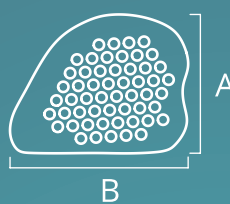
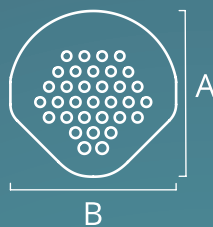
### SU-POR Flex Sheet

CAT#	DESCRIPTION	A	B	C
4109	Regular	56	91	4.5
4134	Regular + Membrane	56	91	4.5

## TEMPORAL FLEX GRID



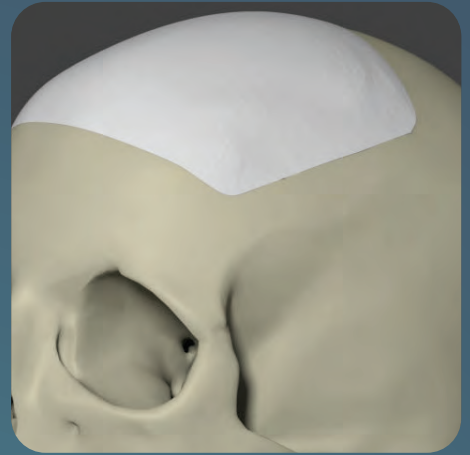
The Temporal Flex Grid is designed to augment deficient soft tissue in the temporal region. The Temporal Flex Grid has a thin, contoured temporal surface designed to provide proper anatomical fit and a more natural result.



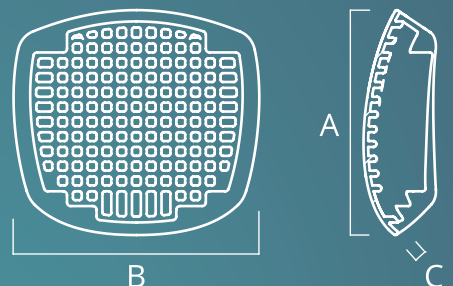
### SU-POR Temporal Flex Grid

CAT#	DESCRIPTION	A	B	C
4110	Small - Left	61	78	18
4111	Small - Right	61	78	18
4112	Medium - Left	74	93	20
4113	Medium - Right	74	93	20
4114	Large - Left	82	105	20
4115	Large - Right	82	105	20
4363	SP - Small	70	70	10
4364	SP - Medium	88	86	15
4365	SP - Large	95	98	18

## CRANIAL FLEX GRID



The Cranial Flex Grid is designed to address full-thickness cranial defects as an alternative to calvarial bone grafts. The design provides strength and flexibility and allows for the implant to be cut to the desired shape at the time of surgery.



### SU-POR Cranial Flex Grid

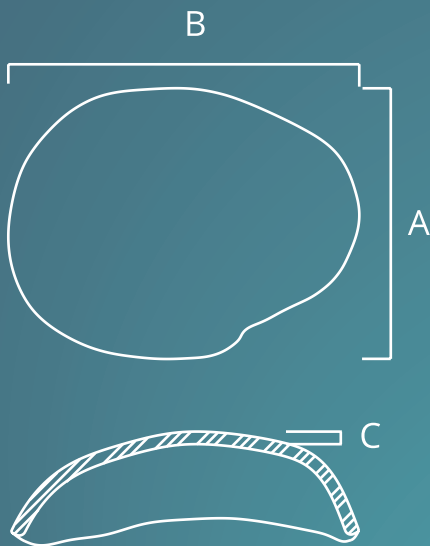
CAT#	A	B	C
4108	97	106	6

## CRANIAL HEMISPHERE



The Cranial Hemisphere is designed to provide surgeons with a reconstructive option for large cranial defects.

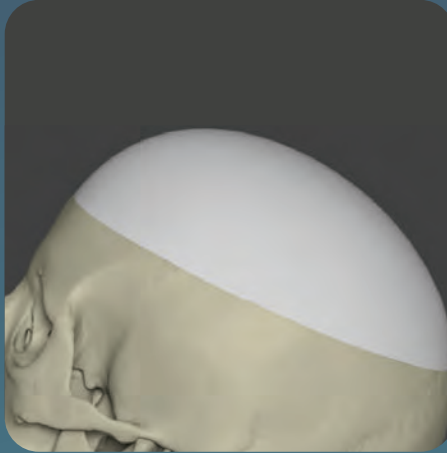
The Cranial Hemisphere provides alternatives to customized implants, grafts, and other implant materials.



### SU-POR Cranial Hemisphere

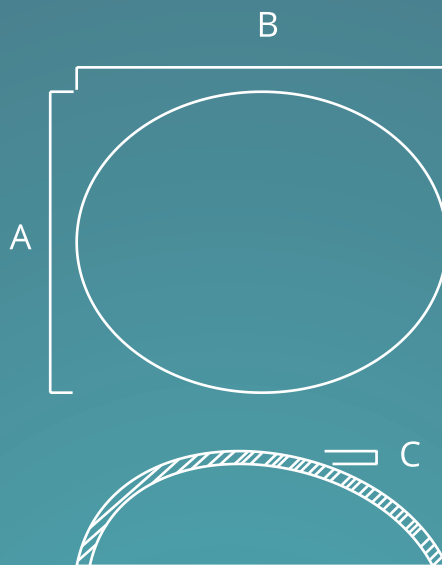
CAT#	DESCRIPTION	A	B	C
4116	Left	124	170	4.5
4117	Right	124	170	4.5
4118	Left	124	170	6
4119	Right	124	170	6

## CRANIAL DOME



The Cranial Dome is designed to provide surgeons with a reconstructive option for large cranial defects.

The Cranial Dome approximates the contour of the superior 1/3 of the cranium and is available in 4mm and 6mm thickness.



### SU-POR Cranial Dome

CAT#	DESCRIPTION	A	B	C
4120	Regular	150	180	4
4121	Large	150	180	6

The background is a dark teal color with several overlapping, organic, light teal shapes that resemble liquid droplets or cells. The shapes are positioned in the upper and middle sections of the page, creating a layered, abstract effect.

**ORBITAL**

## SPHERE



The Su-Por Sphere provides surgeons with an excellent fully porous option for enucleation and evisceration procedures. The Sphere is available in multiple sizes to ensure the best possible fit.

Wrapping of the Sphere implant is optional, as extraocular muscles may be sutured directly to the implant. A disposable enucleation introducer is packaged with each implant.



### SU-POR Sphere

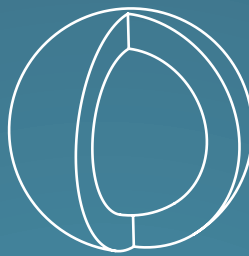
CAT#	DIAMETER
4028	14
4029	16
4030	18
4031	19
4032	20
4033	21
4034	22
4035	23

## COR-TEC™ SPHERE



The Cor-Tec Sphere restores volume following enucleation or evisceration procedures. A porous, integrating shell surrounds the solid sphere, reducing the potential for implant migration. The solid core eliminates the potential for a center-space void of fibrovascular ingrowth.

Muscles can be sutured directly to the smooth outer surface of the implant, eliminating the need for implant wrapping materials. A disposable enucleation introducer is packaged with each implant.



Shown in cut section for clarity

EXCLUSIVE  
PRODUCT

PATENTED

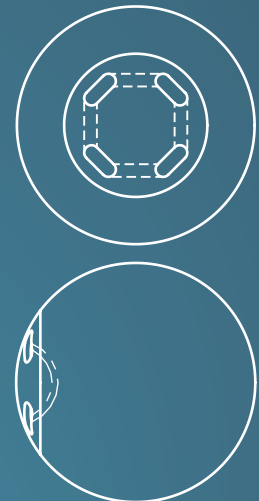
### SU-POR Cor-Tec™ Sphere

CAT#	DIAMETER
4042	16
4043	18
4045	20
4047	22

## QUADRO-PORT TUNNEL ORBITAL SPHERE



The Quadro-Port Tunnel Orbital Sphere is an ocular implant with a smooth anterior surface and prefabricated tunnels for sutures to pass through when attaching extraocular muscles directly to the implant without the need for a wrapping material. A disposable enucleation introducer is packaged with each implant.



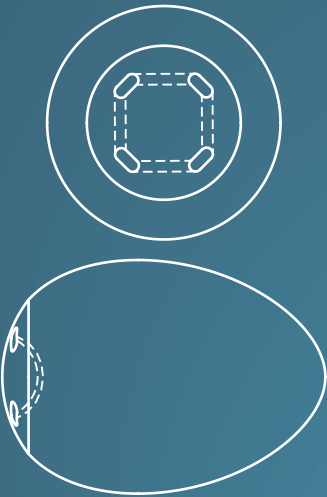
### SU-POR Quadro-Port Tunnel Orbital Sphere

CAT#	DIAMETER
4036	16
4037	18
4039	20
4041	22

## QUADRO-PORT TUNNEL CONICAL ORBITAL IMPLANT



The Quadro-Port Tunnel Conical Orbital Implant (COI) is a conical shaped ocular implant with a smooth anterior surface and prefabricated tunnels for sutures to pass through when attaching extraocular muscles. The conical shape provides more volume posteriorly; approximately equivalent to the volume of a sphere with 2mm larger diameter. A disposable enucleation introducer is packaged with each implant.



EXCLUSIVE  
PRODUCT

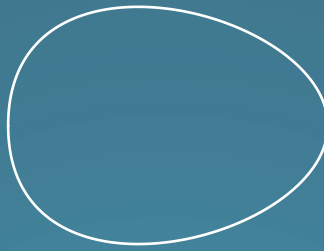
### SU-POR Quadro-Port Tunnel Conical Orbital Implant

CAT#	DESCRIPTION	DIAMETER
4059	3.0mL Volume	16
4060	4.2mL Volume	18
4062	5.6mL Volume	20
4063	7.4mL Volume	22

## CONICAL ORBITAL IMPLANT



The Conical Orbital Implant (COI) provides an excellent option for enucleation and evisceration procedures where more volume is required. The conical shape provides more volume posteriorly; approximately equivalent to the volume of a sphere with 2mm larger diameter. A disposable enucleation introducer is packaged with each implant.



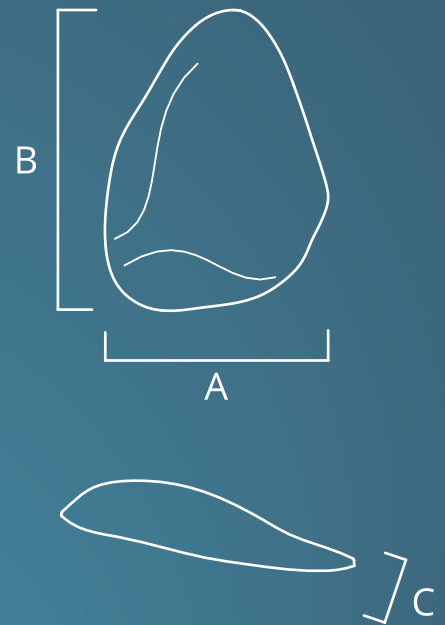
### SU-POR Conical Orbital Implant

CAT#	DESCRIPTION	DIAMETER
4054	3.0mL Volume	16
4055	4.2mL Volume	18
4057	5.6mL Volume	20
4058	7.4mL Volume	22

## ENOPHTHALMOS WEDGE



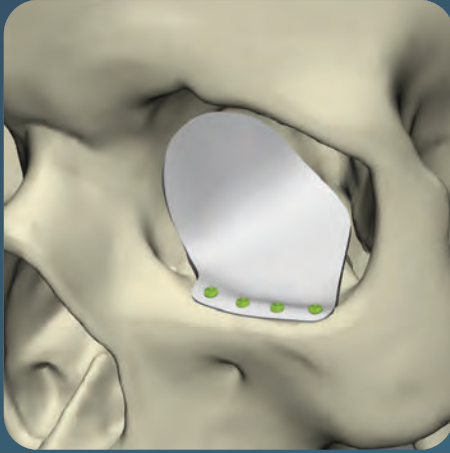
The Enophthalmos Wedge is designed to mimic the shape of the orbital floor and provides volume to the orbit.



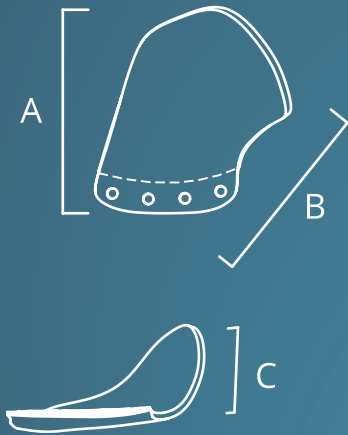
### SU-POR Enophthalmos Wedge

CAT#	DESCRIPTION	A	B	C
4180	Regular - Left	24	33.5	7
4181	Regular - Right	24	33.5	7
4182	Large - Left	28	40	7.5
4183	Large - Right	28	40	7.5

## 3D ORBITAL FLOOR



The 3D Orbital Floor is an off-the-shelf anatomic design based on CT data for medium to large orbital floor fractures. The structure is comprised of porous bone side to prevent migration and a nonporous layer that are heat bonded together to provide support while extending over the orbital rim for a smooth transition to bone. The eyelets accommodate 1.3mm self-drilling screws. When contouring, the implant bends and holds the desired shape without the heating.



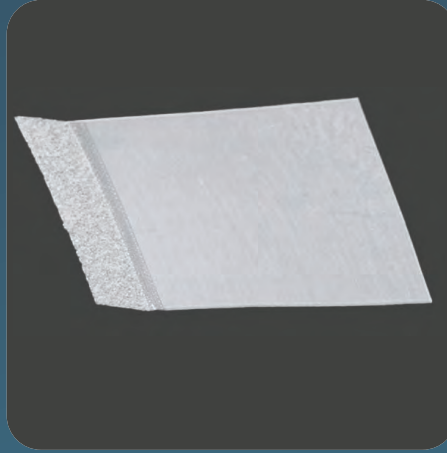
EXCLUSIVE PRODUCT

PATENTED

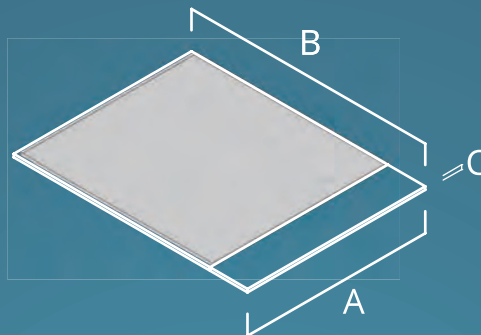
### SU-POR 3D Orbital Floor

CAT#	DESCRIPTION	A	B	C
4452	Small - Right	30	35	13
4453	Small - Left	30	35	13
4456	Large - Right	34	37.5	16
4457	Large - Left	34	37.5	16

## FLOR-TEC™ COMPOSITE ORBITAL FLOOR



The Su-Por Flor-Tec™ Composite Orbital Floor is a composite structure of Su-Por biomaterial. It is comprised of a nonporous sheet and a leading porous strip. Nonporous high-density polyethylene acts to prevent tissue ingrowth while the porous strip may help to facilitate implant attachment and stabilization.



EXCLUSIVE PRODUCT

PATENTED

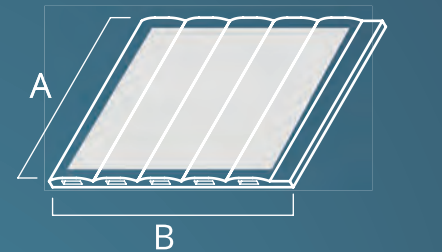
### SU-POR Flor-Tec™ Composite Orbital Floor

CAT#	A	B	C
4233	38	50	0.3
4232	38	50	0.4
4234	38	50	0.5

## CHANNEL SHEET



The Channel Sheet and Membrane Channel Sheet are designed for repair of significant orbital floor and wall trauma where the addition of a rigid fixation plate provides structural support. The membrane layer acts to inhibit tissue ingrowth. Comes in Mini- and Micro-channel sizes.



Channel Details

2.3mm

Micro- and Mini-plate sized channels available

Miniplate Channel Width: 4.0mm

Microplate Channel Width: 2.3mm

EXCLUSIVE PRODUCT

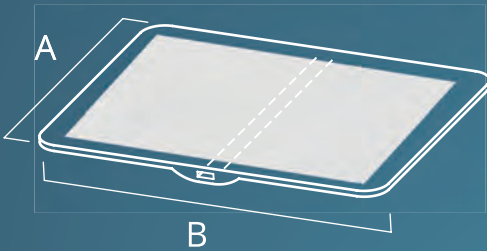
### SU-POR Channel Sheet

CAT#	DESCRIPTION	A	B
4298	Mini Regular	40	52
4300	Mini Membrane	40	52
4299	Micro Regular	40	52
4301	Micro Membrane	40	52

# SINGLE CHANNEL SHEET



The Single Channel Sheet is for significant orbital floor and wall trauma. The addition of a single rigid fixation plate provides increased structural support. The internal channel accepts microplates from conventional plating systems, facilitating fixation to bone. It is available with optional heat bonded nonporous membrane layer.



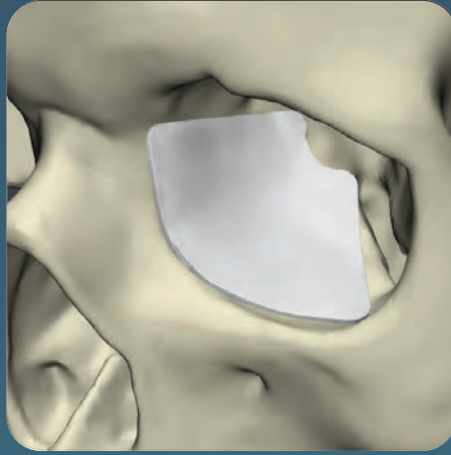
Channel Width: 2.3mm

EXCLUSIVE PRODUCT

## SU-POR Single Channel Sheet

CAT#	DESCRIPTION	A	B
4297	Regular	38	50
4296	Membrane	38	50

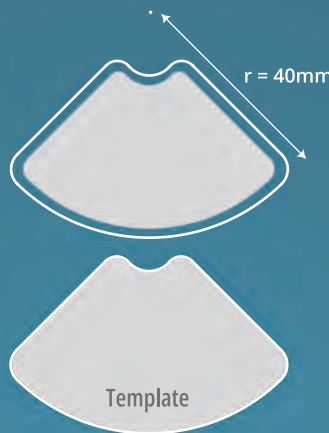
# FAN PLATE



The Su-Por Fan Plate is designed for medium to large orbital floor defects. The smooth template allows for modification of the implant to fit the desired location and introduce the porous implant without damaging the soft tissue.

1. Shape the template and rinse clean.
2. Transfer the shape and contour to the implant.
3. Use the template as an introducer for implant.

The implant is available with or without nonporous membrane layer and can be fixated with screws or sutures.



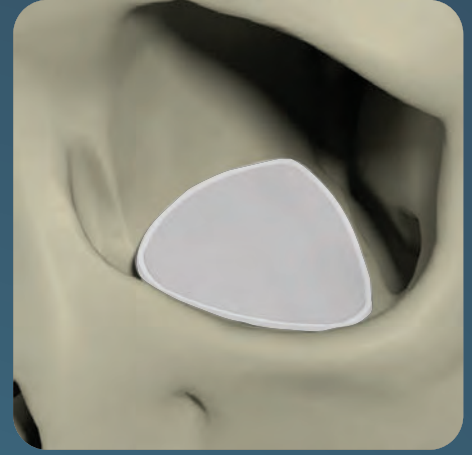
EXCLUSIVE PRODUCT

PATENT PENDING

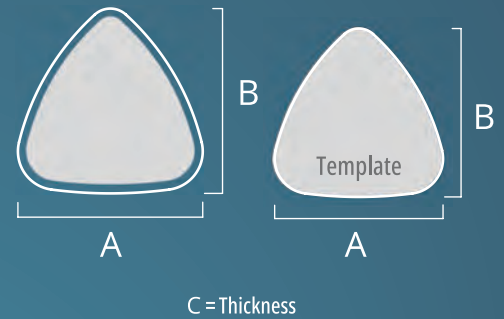
## SU-POR Fan Plate

CAT#	DESCRIPTION	Thickness
4487	40mm Radius w Template	0.85
4488	40mm Radius w Template	1.5
4489	Membrane - 40mm Radius w Template	1.0

# ORBITAL FLOOR PLATE



Designed for small to medium orbital floor defects. The smooth template allows for modification of the implant to fit the desired location and introduce the porous implant without damaging the soft tissue. The implant is available with or without a nonporous membrane layer and can be fixated with screws or sutures.



EXCLUSIVE PRODUCT

PATENT PENDING

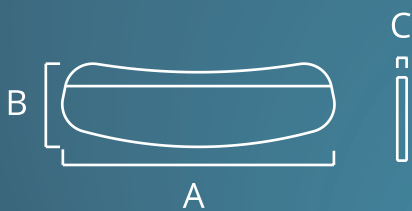
## SU-POR Orbital Floor Plate

CAT#	DESCRIPTION	A	B	C
4478	Small w Template	24	24	0.85
4479	Medium w Template	30	30	0.85
4480	Large w Template	35	35	0.85
4481	Small w Template	24	24	1.5
4482	Medium w Template	30	30	1.5
4483	Large w Template	35	35	1.5
4484	Small Membrane w Template	24	24	1.0
4485	Medium Membrane w Template	30	30	1.0
4486	Large Membrane w Template	35	35	1.0

## LOWER EYELID IMPLANT



The Lower Eyelid Implant is an excellent addition for the management of patients with symptomatic paralytic ectropion. The thin, tissue-like profile aids in greater eyelid stability. The Lower Eyelid Implant is fully porous to promote tissue ingrowth and facilitate implant stabilization. The implant is placed in the middle lamellar space inferior to the tarsus and under no tension. It is also available with a strip to provide additional support.



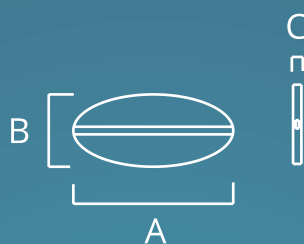
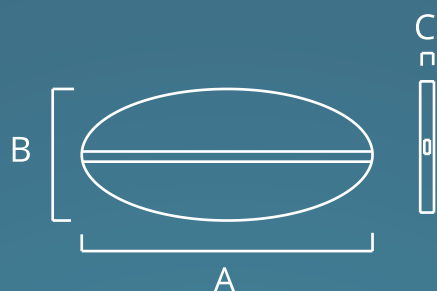
### SU-POR Lower Eyelid Implant

CAT#	DESCRIPTION	A	B	C
4436	Regular	29.5	9	0.45
4437	Regular + Superior Strip	29.5	9	0.45

## AIRO™ IMPLANT



The AIRO implant is a composite microchannel-suture implant that provides a minimally invasive option to lift and fill the eyebrow ROOF fat with a porous scaffold. The implant becomes bio-integrated while avoiding cheesewiring through soft tissue, providing long-term, lasting results.



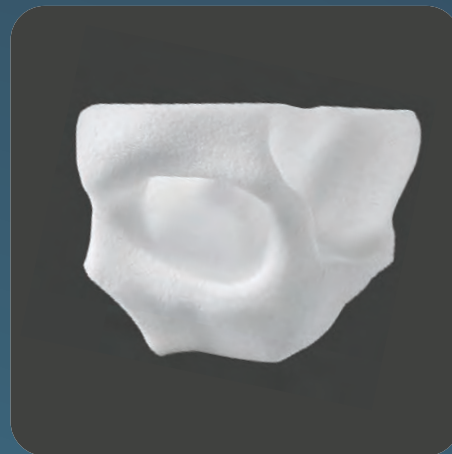
EXCLUSIVE  
PRODUCT

PATENTED

### SU-POR AIRO™ Implant

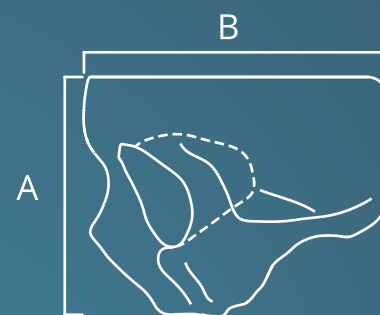
CAT#	DESCRIPTION	A	B	C
4442	Small - Qty 1	10	5	0.45
4443	Large - Qty 1	21	9.5	0.45
4444	Small - Qty 2	10	5	0.45
4445	Large - Qty 2	21	9.5	0.45

## COMPLETE ORBIT



The Complete Orbit is designed to restore bony structures of the orbit.

The Complete Orbit may be modified to meet the structural and anatomic needs of the patient for a large variety of defects.



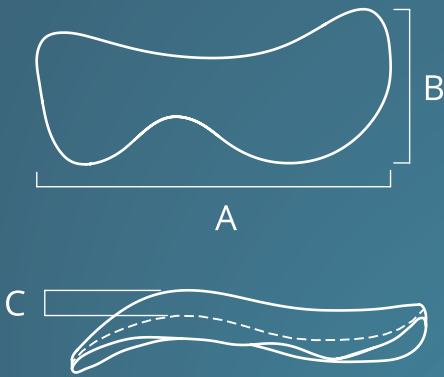
### SU-POR Complete Orbit

CAT#	DESCRIPTION	A	B	C
4226	Left	77	97	63
4227	Right	77	97	63

## INFERIOR ORBITAL RIM



The Inferior Orbital Rim provides anterior projection and is designed to be trimmed to meet the needs of the individual patient.



### SU-POR Inferior Orbital Rim

CAT#	DESCRIPTION	A	B	C
4064	Left	43	18	3.2
4065	Right	43	18	3.2

## INFERIOR MEDIAL ORBITAL RIM



The Inferior Medial Orbital Rim fits over the inferior orbital rim and extends both superiorly and inferiorly medial to the inferior orbital nerve.



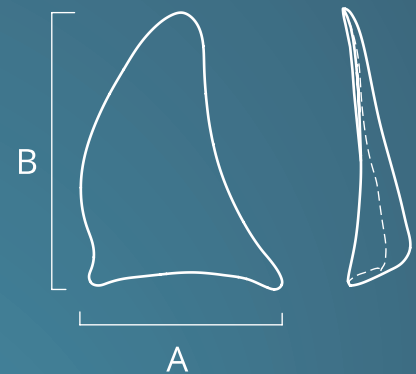
### SU-POR Inferior Medial Orbital Rim

CAT#	DESCRIPTION	A	B	C
4191	Left	25	26	2.5
4192	Right	25	26	2.5

## SUPERIOR LATERAL ORBITAL RIM



The Superior Lateral Orbital Rim is designed to augment the lateral and superior orbital rims. It can be trimmed to meet the needs of the individual patient.



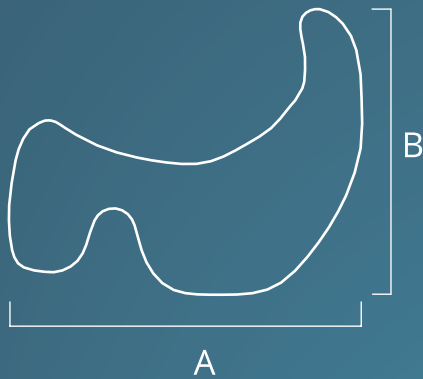
### SU-POR Superior Lateral Orbital Rim

CAT#	DESCRIPTION	A	B
4251	Left	33	45
4252	Right	33	45

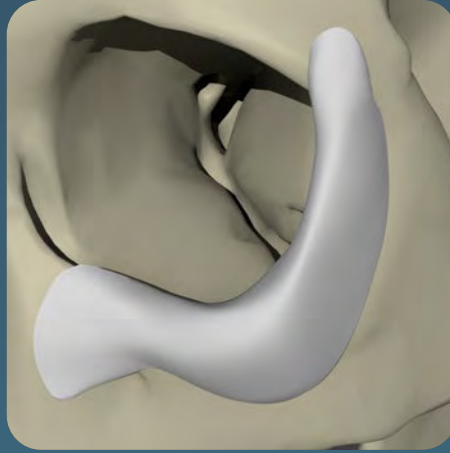
## EXTENDED ORBITAL RIM



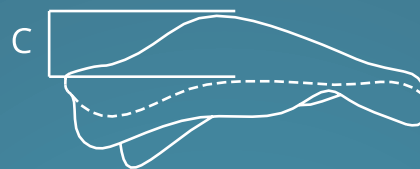
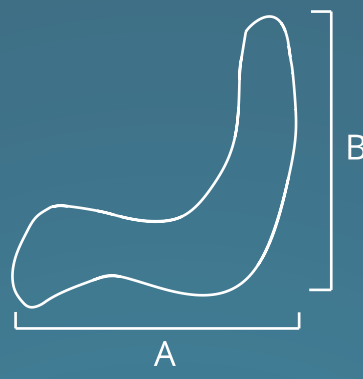
The Extended Orbital Rim provides surgeons with a large amount of implant to work with, allowing for trimming as required, to fit a large array of orbital rim defects.



## ORBITAL RIM ONLAY



The Orbital Rim Onlay is designed to augment the lateral and inferior orbital rims and subtly increase the anterior projection.



### SU-POR Extended Orbital Rim

CAT#	DESCRIPTION	A	B	C
4066	Left	47	40	6.33
4067	Right	47	40	6.33

### SU-POR Orbital Rim Onlay

CAT#	DESCRIPTION	A	B	C
4253	Left	40	40	8.45
4254	Right	40	40	8.45

The image features a solid teal background with several overlapping, organic, light-teal shapes that resemble water droplets or soft-edged circles. On the right side, the word "FACIAL" is written in a large, bold, white, sans-serif font, oriented vertically.

**FACIAL**

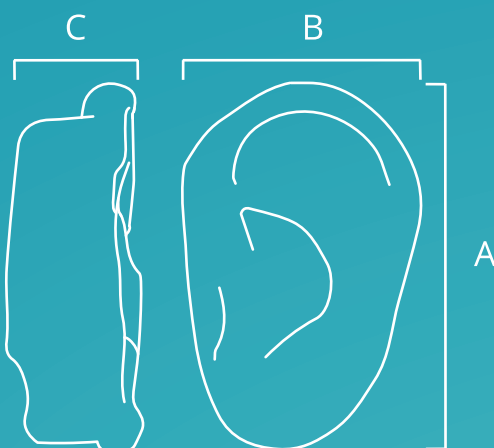
# ONE PIECE EAR



Su-Por Ears offer off-the-shelf availability for outer ear reconstruction and may save the time and expense of harvesting cartilage graft material.

The Su-Por Ear provides structural base for temporal parietal fascia flap and skin grafts. Meticulous dissection and harvesting of the vascular tissue flap is required to prevent late stage exposure.

An ear selection kit is available to assist in the appropriate size and contour match for your patient during consultation.



EXCLUSIVE PRODUCT

PATENT PENDING

## SU-POR One Piece Ear

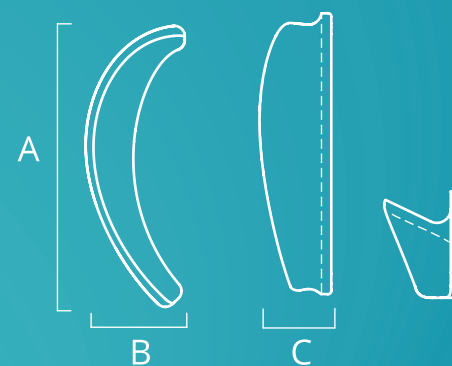
CAT#	CAT#	A	B	C	CAT#	CAT#	A	B	C
4600L	4601R	55mm	32mm	18mm	4624L	4625R	55mm	40mm	24mm
4602L	4603R	57mm	36mm	26mm	4626L	4627R	56mm	37mm	23mm
4604L	4605R	58mm	38mm	32mm	4628L	4639R	60mm	40mm	27mm
4606L	4607R	56mm	38mm	27mm	4630L	4631R	59mm	37mm	31mm
4608L	4619R	51mm	35mm	30mm	4632L	4633R	53mm	36mm	28mm
4610L	4611R	56mm	35mm	30mm	4634L	4635R	50mm	33mm	26mm
4612L	4613R	55mm	35mm	31mm	4636L	4637R	60mm	38mm	30mm
4614L	4615R	58mm	36mm	32mm	4638L	4649R	63mm	38mm	31mm
4616L	4617R	53mm	35mm	31mm	4640L	4641R	52mm	35mm	28mm
4618L	4629R	56mm	33mm	32mm	4642L	4643R	57mm	38mm	23mm
4620L	4621R	56mm	36mm	29mm	4644L	4645R	55mm	34mm	21mm
4622L	4623R	46mm	34mm	28mm	4646L	4647R	56mm	34mm	28mm

# EAR WEDGE



The Ear Wedge enhances lateral projection in reconstructed ears, complementing autologous rib graft procedures. Made from durable porous polyethylene, it supports tissue integration and long-term stability.

The implant can be easily trimmed to match the projection of the contralateral ear, allowing for precise customization. It helps achieve balanced, natural-looking results with improved symmetry and projection.



EXCLUSIVE PRODUCT

## SU-POR Ear Wedge

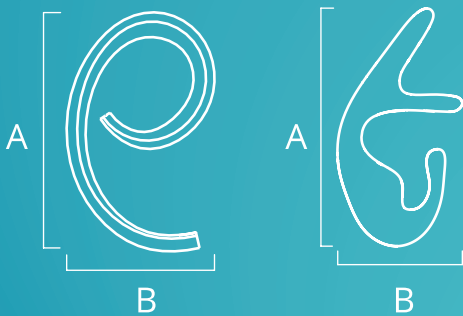
CAT#	DESCRIPTION	A	B	C
4294	Thin - Left	44	15	11
4295	Thin - Right	44	15	11

## AURICULAR SHAPES



Su-Por Auricular shapes are designed to support partial ear reconstructions for restoring ear segments affected by trauma, cancer, or other conditions. These implants provide tailored options for targeted reconstruction, such as the ear rim or base.

The porous polyethylene material provides a durable and supportive structure for integration with a vascular tissue flap, such as a temporal parietal fascia flap, combined with skin grafts. Successful outcomes depend on the surgeon's technique and the proper use of vascularized tissue to ensure implant stability and minimize the risk of late exposure.



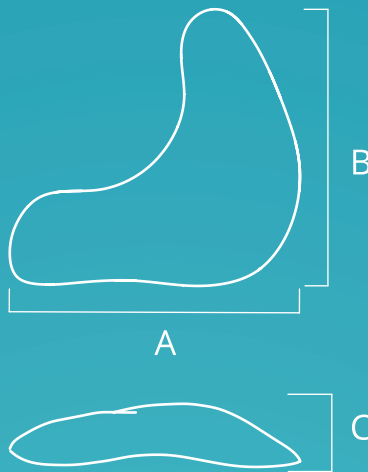
### SU-POR Auricular Shapes

CAT#	DESCRIPTION	A	B
4099	Ear Base - Left	63	32
4100	Ear Base - Right	63	32
4101	Helical - Left	63	39
4102	Helical - Right	63	39

## PARANASAL



The paranasal implant is designed for augmentation and restoration of the midface in patients who have midfacial deficiency, improving facial harmony and balance.



### SU-POR Paranasal

CAT#	DESCRIPTION	A	B	C
4156	Small - Left	28	26	4.5
4157	Small - Right	28	26	4.5
4158	Large - Left	30	28	7
4159	Large - Right	30	28	7

## NASAL SHEET



The Nasal Sheet provides surgeons with a solution for when nasal tip projection is required. The Nasal Sheet can be used to support the tip by implantation between the medial crura of the alar cartilage.



### SU-POR Nasal Sheet

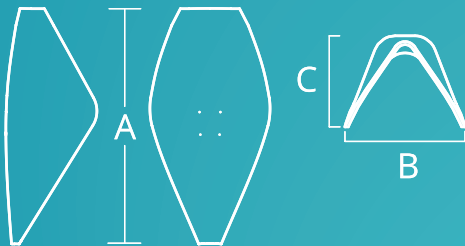
CAT#	A	B	C
4107	40	9	1.1

## NASAL DORSAL SHELL



The Nasal Dorsal Shell is an excellent reconstruction option for correcting nasal deformities. The implant mimics the shape of the nasal bones and upper lateral cartilage. Nasal Shell inserts can be used in dorsal areas where additional augmentation is required. The implant can be sutured directly to the upper lateral cartilage on each side of the nose, or any other desired location.

Each Nasal Dorsal Shell is packaged with a non-porous, smooth template for aiding in the shaping and placement of the implant.



EXCLUSIVE PRODUCT

### SU-POR Nasal Dorsal Shell

CAT#	A	B	C
4103	43	22	16

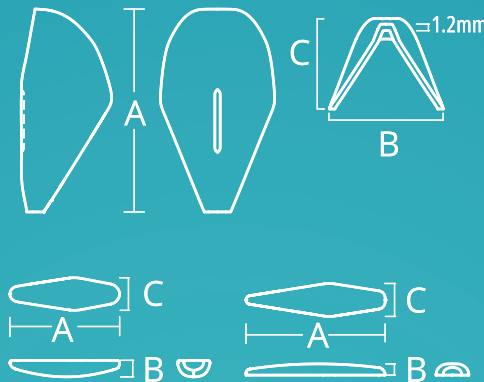
## NASAL SHELL



The Nasal Shell provides surgeons with an excellent option for augmenting or correcting deformities of the nose.

It is designed to be thin and flexible, providing a versatile option for plastic and reconstructive surgery. The implant can be sutured directly to the upper lateral cartilage on each side of the nose, or any other desired location.

Each Nasal Shell is packaged with a non-porous, smooth template for aiding in the shaping and placement of the implant.



EXCLUSIVE PRODUCT

### SU-POR Nasal Shell

CAT#	DESCRIPTION	A	B	C
4368	Regular	38	21	17
	Insert - Small (Included)	30	4	9
	Insert - Large (Included)	38	2.5	9
4369	Large	40	20	18
	Insert - Small (Included)	32	4	9
	Insert - Large (Included)	41	3.1	9

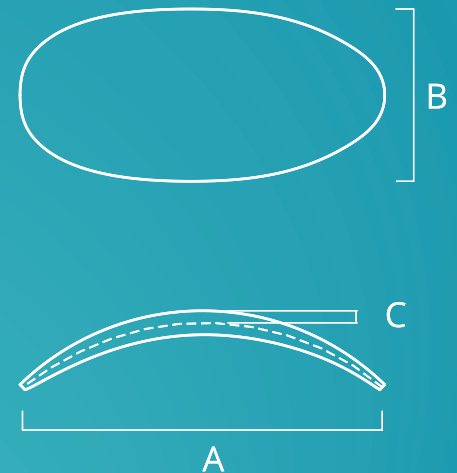
## NASAL BATTEN



The Nasal Batten is designed for nasal reconstruction procedures involving the external nasal valve and alar cartilage.

The implant shape is elongated and concave to fit and support the external nasal valve structure.

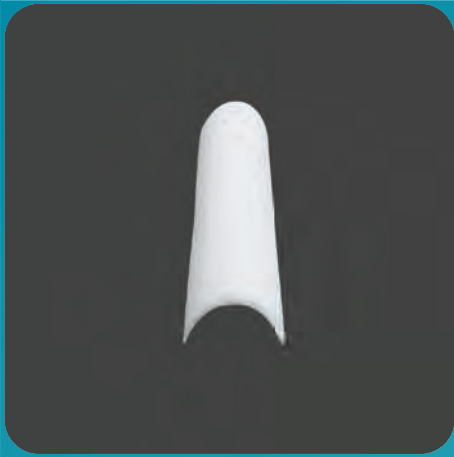
Two implants are provided per package.



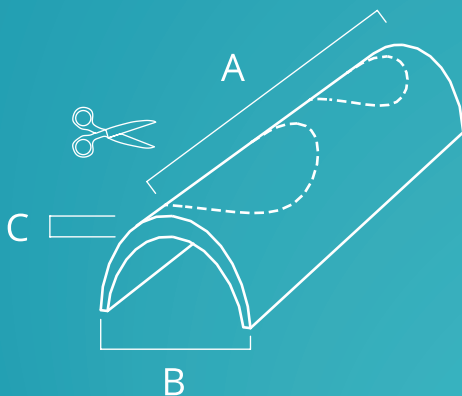
### SU-POR Nasal Batten

CAT#	A	B	C
4240	25	12.5	0.6

## NASAL ARCH



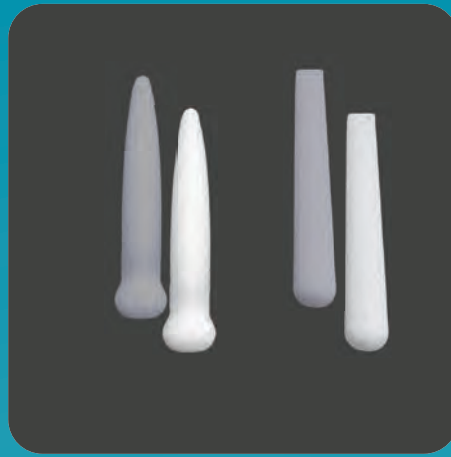
The Nasal Arch can be used effectively to create a nasal onlay where subtle augmentation of the dorsum is required, providing the desired projections and contour to the bridge of the nose. Care should be taken to place the Nasal Arch appropriately in the dorsum area and to avoid extending the Nasal Arch proximally into the soft nasal cartilage area of the tip. The edge of the Nasal Arch should be feathered to promote a smooth transition from the implant to the patient's natural contour.



### SU-POR Nasal Arch

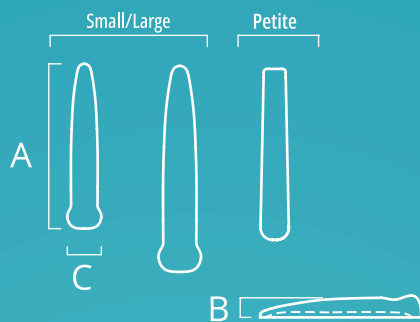
CAT#	DESCRIPTION	A	B	C
4244	Small	70	13	2
4245	Medium	70	15	2
4246	Large	70	17	2

## NASAL DORSUM



The Nasal Dorsum is designed to provide subtle augmentation to the dorsum. The implants should be trimmed, as needed, to fit the needs of the patient. The Petite Nasal Dorsum is designed with a tapered profile to provide a gradual and natural transition to the augmented area.

Each Petite Nasal Dorsum is packaged with a non-porous, smooth template for aiding in the shaping and sizing of the implant.



**EXCLUSIVE PRODUCT**

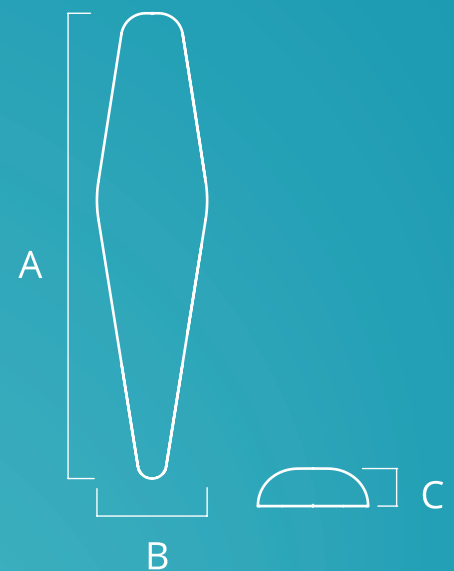
### SU-POR Nasal Dorsum

CAT#	DESCRIPTION	A	B	C
4104	Regular	55	6	9
4239	Small	54	6	11
4238	Large	67	9	14
4313	Petite	45	4	4
4314	Petite	55	4	4
4315	Petite	45	5	5
4316	Petite	55	5	5
4317	Petite	55	6	9

## NASAL ONLAY



The Nasal Onlay is designed to augment the dorsum of the nose. It may be used in its entirety or trimmed to meet the needs of the individual patient.



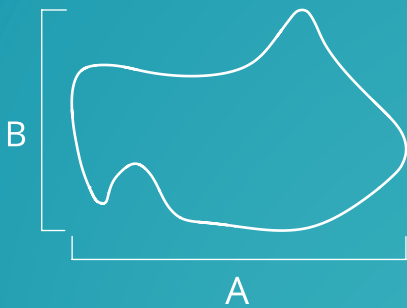
### SU-POR Nasal Onlay

CAT#	A	B	C
4370	41	9	3.1

## MIDFACE CONTOUR



The Midface Contour provides surgeons with a large area of implant to be trimmed to meet the needs of the individual patient.



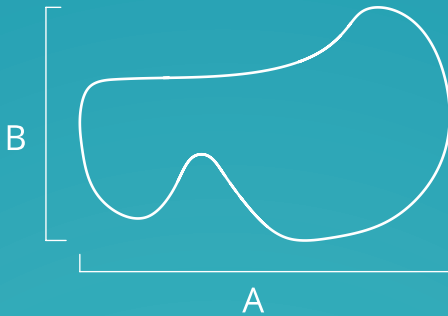
### SU-POR Midface Contour

CAT#	DESCRIPTION	A	B	C
4255	Left	60	40	4
4256	Right	60	40	4

## MIDFACE RIM



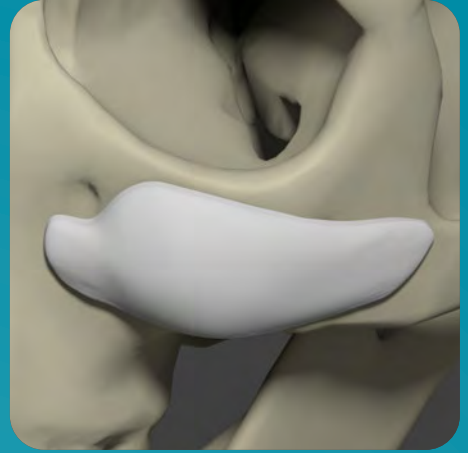
The Midface Rim is designed to augment and repair bony structures of the midface, inferior orbital rim, and malar regions. The implant may be used in its entirety or modified based on the patient's requirements and aesthetic goals.



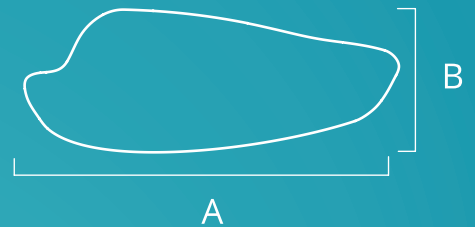
### SU-POR Midface Rim

CAT#	DESCRIPTION	A	B	C
4189	Left	47	28	3
4190	Right	47	28	3

## SP1 MALAR



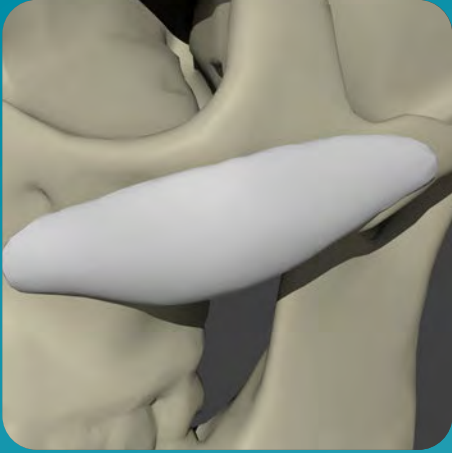
The SP1 Malar is designed to subtly augment and correct defects in the malar region, with the greatest projection in the malar prominence. The implant design accommodates the infraorbital facial nerve and tapers to the zygomatic arch.



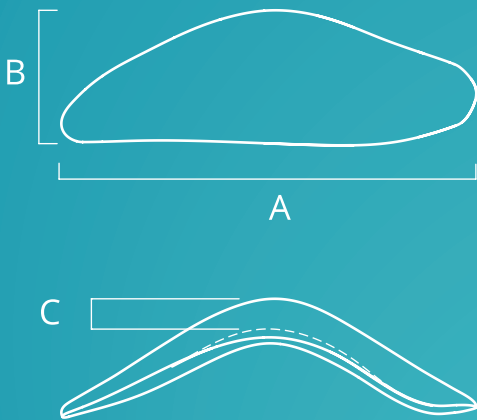
### SU-POR SP1 Malar

CAT#	DESCRIPTION	A	B	C
4082	Small - Left	50	19	3
4083	Small - Right	50	19	3
4084	Regular - Left	50	19	5
4085	Regular - Right	50	19	5

## SP2 MALAR



The SP2 Malar is designed to subtly augment the malar bone and follow the natural contours, from the zygomatic arch, over the malar prominence, and down to the maxillary buttress. The implants medial edge should be positioned directly below the infraorbital nerve.



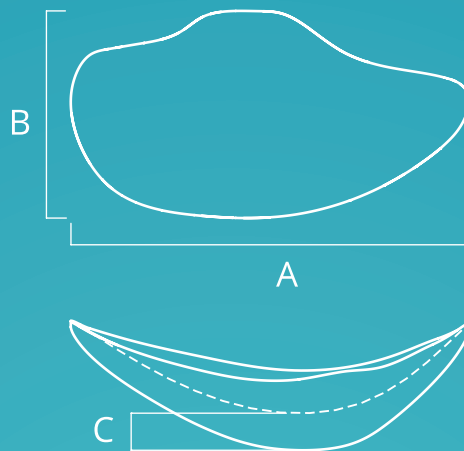
### SU-POR SP2 Malar

CAT#	DESCRIPTION	A	B	C
4086	Small - Left	64	19	3
4087	Small - Right	64	19	3
4197	Medium - Left	64	19	4.5
4198	Medium - Right	64	19	4.5
4199	Large - Left	64	19	7
4200	Large - Right	64	19	7

## EXTENDED MALAR



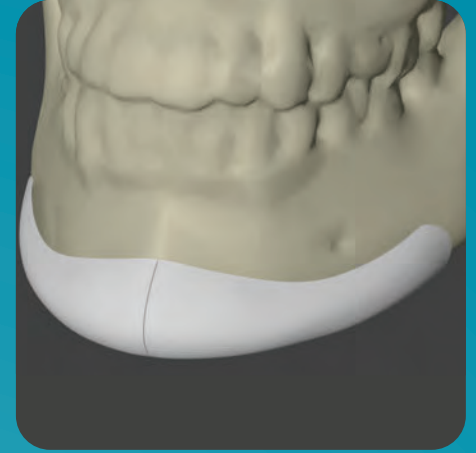
The Extended Malar is designed to add more volume to the malar or to rebuild the contour of the bone structure. The design provides a comprehensive option for malar augmentation, starting in the nasal area and extending to the zygomatic arch.



### SU-POR Extended Malar

CAT#	DESCRIPTION	A	B	C
4201	Small - Left	45	24	3
4202	Small - Right	45	24	3
4203	Medium - Left	50	26	4
4204	Medium - Right	50	26	4
4205	Large - Left	55	27	5
4206	Large - Right	55	27	5

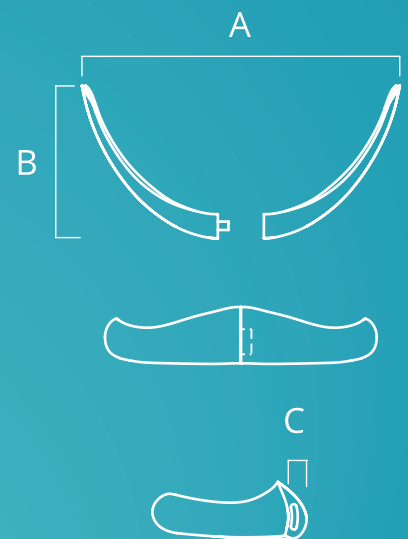
## CONTOURED TWO-PIECE CHIN



The Contoured Two-Piece Chin is designed with a gradual taper and concave posterior surface to provide an excellent anatomical fit to the bony anatomy.

The implant design provides anterior projection and a natural transition laterally to the patient's bone.

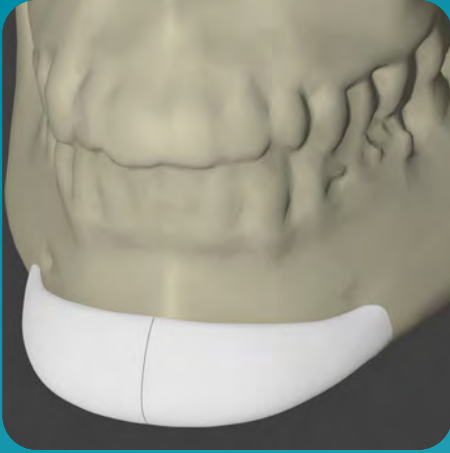
The two-piece design allows for easy insertion and joining of the implants for proper alignment.



### SU-POR Contoured Two-Piece Chin

CAT#	DESCRIPTION	A	B	C
4088	Small	72	42	3
4089	Medium	74	42	5
4090	Large	78	50	7
4091	Extra Large	80	55	9

## TWO-PIECE CHIN



The Two-Piece Chin is designed to allow for easy insertion and placement of the implant. The surgeon can then attach the components together for proper alignment.

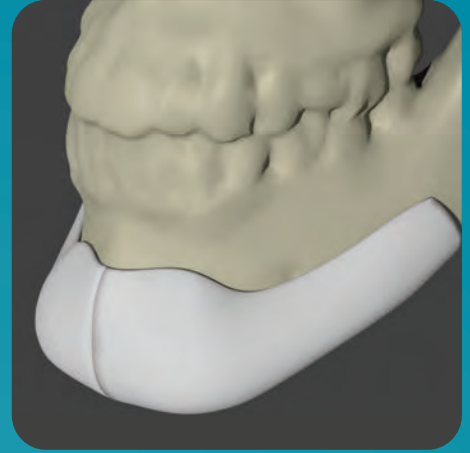
The implant design provides anterior and inferior projection.

## EUROPEAN CUT CHIN

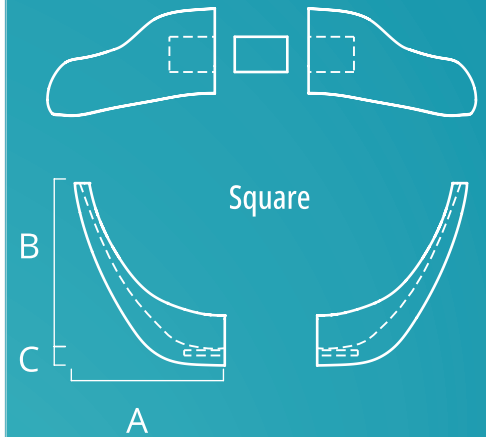
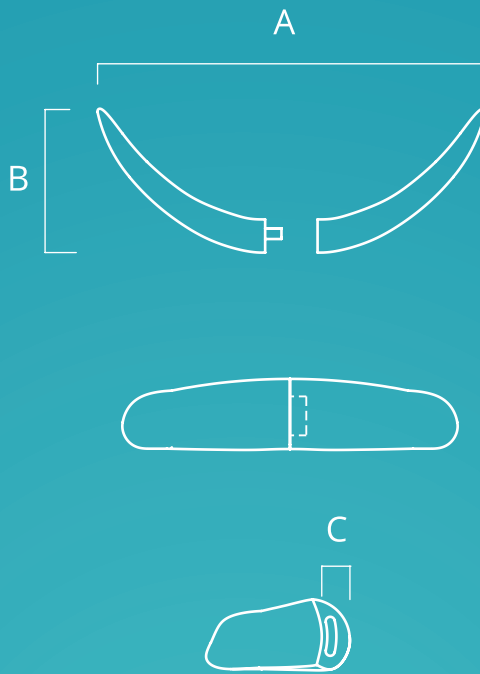
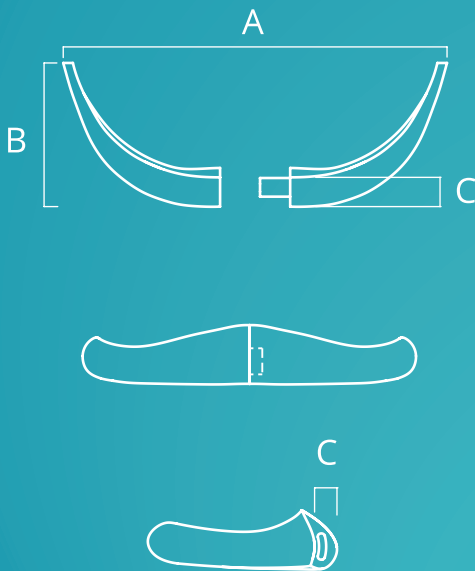


The European Cut Chin is designed to provide an excellent fit to the bony anatomy and prevent augmentation that is too large. The two-piece design allows for easy fit and easy insertion and joining of the implants for proper alignment.

## SQUARE EXTENDED CHIN



The Square Extended Chin is designed to provide tri-dimensional projection (anterior, lateral, and inferior) with a squared contour. A tab is used to join the two halves of the implant for proper alignment.



### SU-POR Two-Piece Chin

CAT#	DESCRIPTION	A	B	C
4092	Small	56	33	5
4093	Medium	56	36	7
4094	Large	57	38	9

EXCLUSIVE PRODUCT

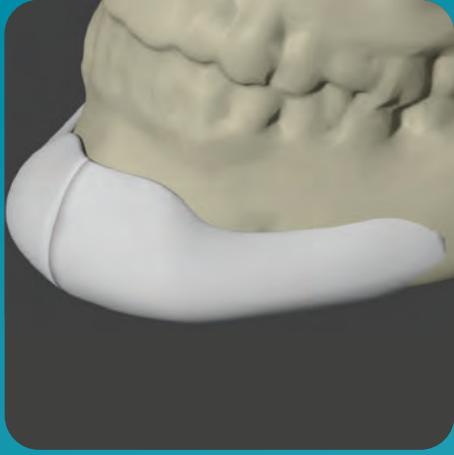
### SU-POR European Cut Chin

CAT#	DESCRIPTION	A	B	C
4581	Contoured - Medium	60	26	5
4582	Small	56	21	5
4583	Medium	58	25	7

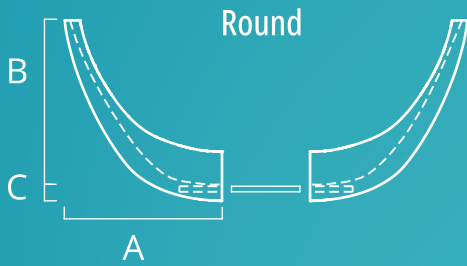
### SU-POR Square Extended Chin

CAT#	DESCRIPTION	A	B	C
4262	Small	45	47	3
4263	Medium	45	47	5
4264	Large	45	47	7

## ROUND EXTENDED CHIN



The Round Extended Chin is designed to provide tri-dimensional projection (anterior, lateral and inferior) with a rounded contour. A tab is used to join the two halves of the implant for proper alignment.



### SU-POR Round Extended Chin

CAT#	DESCRIPTION	A	B	C
4259	Small	45	47	3
4260	Medium	45	47	5
4261	Large	45	47	7

## BUTTON CHIN

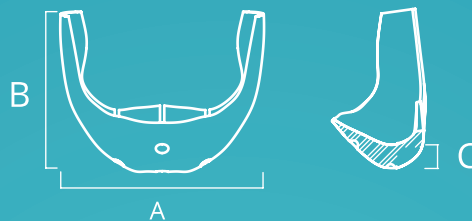


The Button Chin is designed for subtle augmentation to the medial anterior point of the chin. Having multiple sizes allows the surgeon to select the most natural looking configuration.

### Small



### Medium/Large



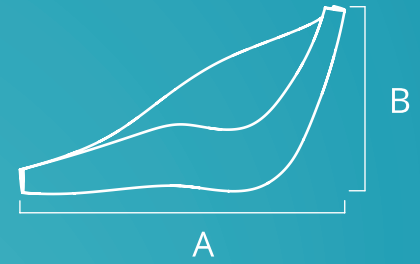
### SU-POR Button Chin

CAT#	DESCRIPTION	A	B	C
4265	Small	40	25	4
4266	Medium	47.5	37.5	5.5
4267	Large	48.5	38	7

## SP MANDIBULAR ANGLE



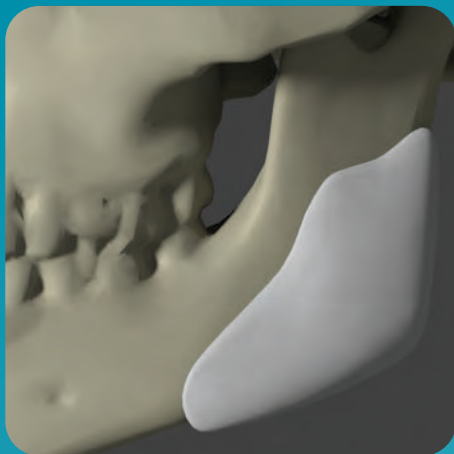
The SP Mandibular Angle is designed to conform to the posterior and inferior borders of the mandibular angle and provide augmentation to the mandible.



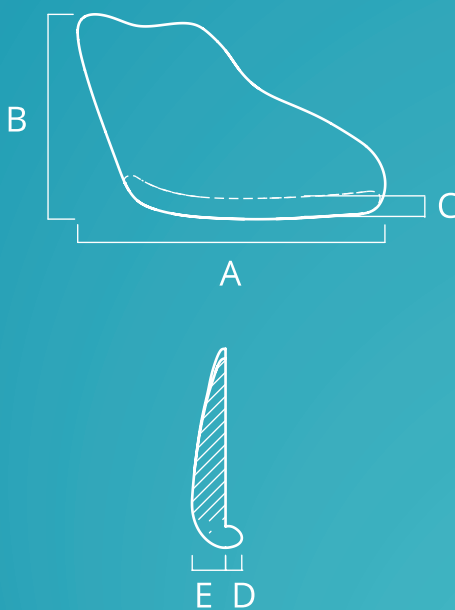
### SU-POR SP Mandibular Angle

CAT#	DESCRIPTION	A	B	C
4150	Small - Left	65	35	3
4151	Small - Right	65	35	3
4152	Medium - Left	65	35	7
4153	Medium - Right	65	35	7
4154	Large - Left	65	35	11
4155	Large - Right	65	35	11

## LATERAL AUGMENTATION MANDIBLE



The Lateral Augmentation Mandible is designed to subtly augment the lateral projection of the mandible.



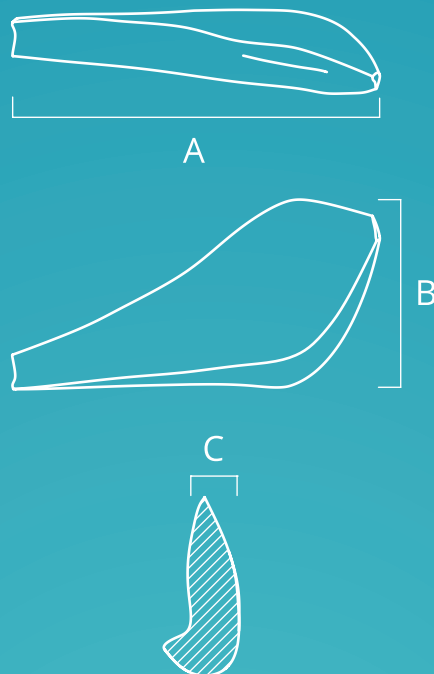
### SU-POR Lateral Augmentation Mandible

CAT#	DESCRIPTION	A	B	C	D	E
4305	Regular - Left	47	38	3	3	6.5
4306	Regular - Right	47	38	3	3	6.5
4307	Large - Left	57	40	4	3	10
4308	Large - Right	57	40	4	3	10

## CONTOURED MANDIBULAR ANGLE



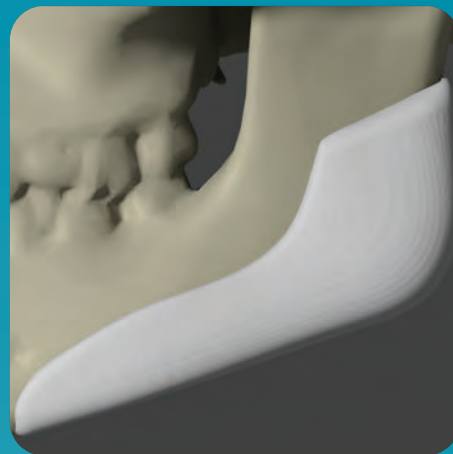
The Contoured Mandibular Angle is designed to subtly augment the mandible. The anatomic shape is designed to reduce gaps and provide a more natural fit to the patient's anatomy.



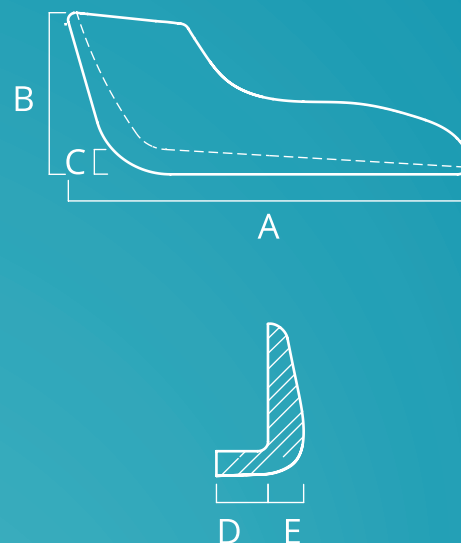
### SU-POR Contoured Mandibular Angle

CAT#	DESCRIPTION	A	B	C
4303	Left	59	29	7
4304	Right	59	29	7

## RAMUS OF THE MANDIBLE



The Ramus of the Mandible implant is specifically designed to enhance and significantly augment the anatomy of the ramus of the mandible.



### SU-POR Ramus of the Mandible

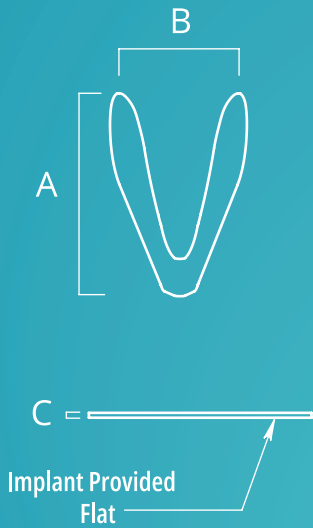
CAT#	DESCRIPTION	A	B	C	D	E
4095	Large 5mm -Left	79	32	5	10	7
4096	Large 5mm -Right	79	32	5	10	7
4097	Large 10mm - Left	79	32	10	10	7
4098	Large 10mm - Right	79	32	10	10	7
4145	Regular 5mm - Left	79	32	5	4	5
4146	Regular 5mm - Right	79	32	5	4	5
4147	Regular 10mm - Left	79	32	10	4	5
4148	Regular 10mm - Right	79	32	10	4	5

## NASAL TIP TOP



The Nasal Tip Top is uniquely designed to provide strength and flexibility while supporting and reshaping the great alar cartilages.

The implant is provided flat and is intended to be folded to create nasal tip defining contours. The implant is placed over the tip cartilage and the folded angles can be modified to provide a defined or broad nasal tip.



### SU-POR Nasal Tip Top

CAT#	A	B	C
4105	37	22	0.5

## RAMESH LIFT FIXATION

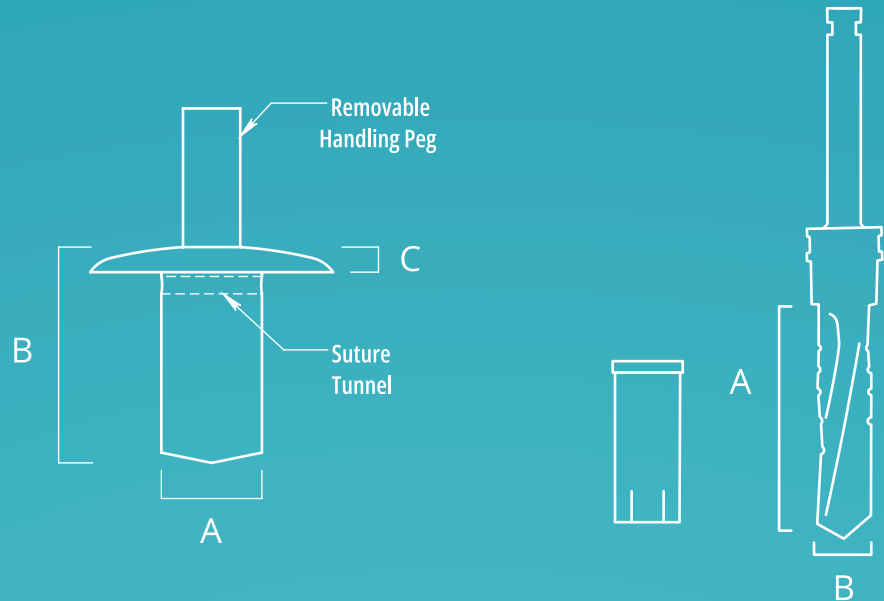
## and DRILL\*



The Ramesh Lift Fixation provides an extra option for fixation in eyebrow lift procedures. The implant minimizes tissue opening, thereby reducing scarring when compared to other devices on the market.

Designed for use with drilled holes at a minimum depth of 6mm, it employs a 2.8mm external irrigation drill and stopper (available separately).

It can be trimmed intraoperatively if a shallower depth is needed. It is equipped with a holding handle, which is to be twisted off after insertion and removed from the surgical site. Resorbable sutures hold the lift in position while the non-resorbing implant integrates with the patient's tissue.



EXCLUSIVE  
PRODUCT

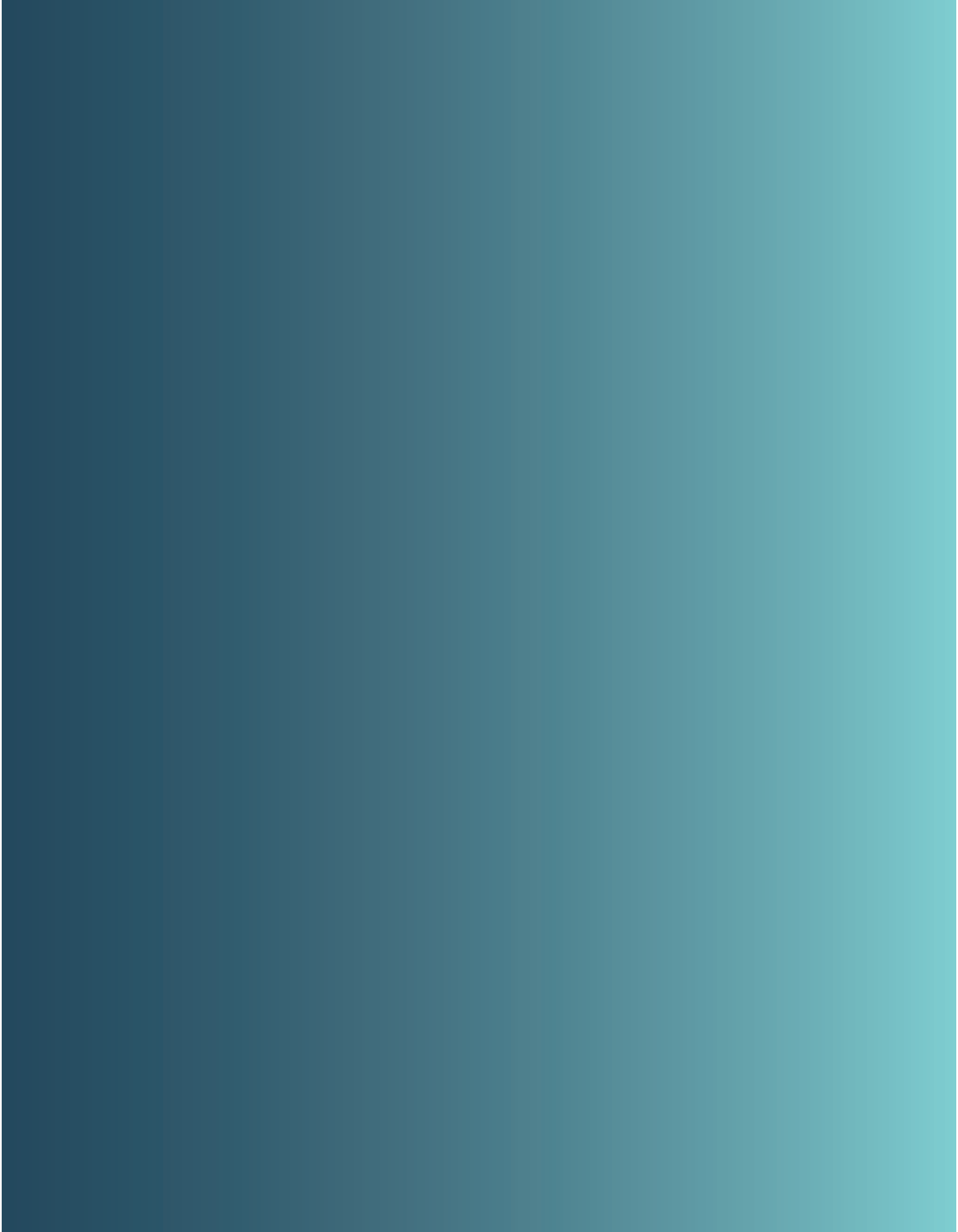
PATENT PENDING

### SU-POR Ramesh Lift Fixation

CAT#	DESCRIPTION	A	B	C
4595	Qty 3	2.9	6.25	0.75

### 2.8mm Drill Bit w/ 6mm Drill Stop

CAT#	A	B
RML2.8	16	2.8



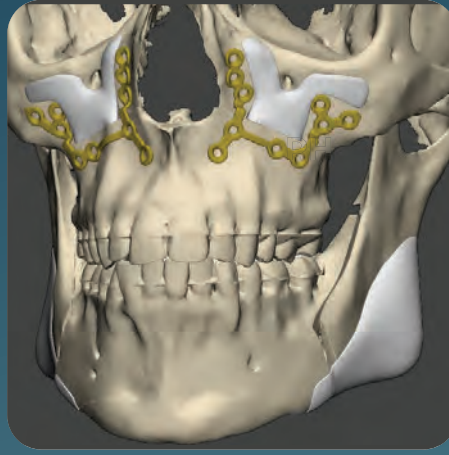
The background features a vertical teal-to-dark-teal gradient. Overlaid on this are several large, organic, rounded shapes in various shades of teal, creating a layered, abstract effect. The shapes vary in opacity and color, with some appearing as solid dark teal and others as lighter, semi-transparent washes.

**PATIENT-SPECIFIC**

## CRANIAL IMPLANT KIT



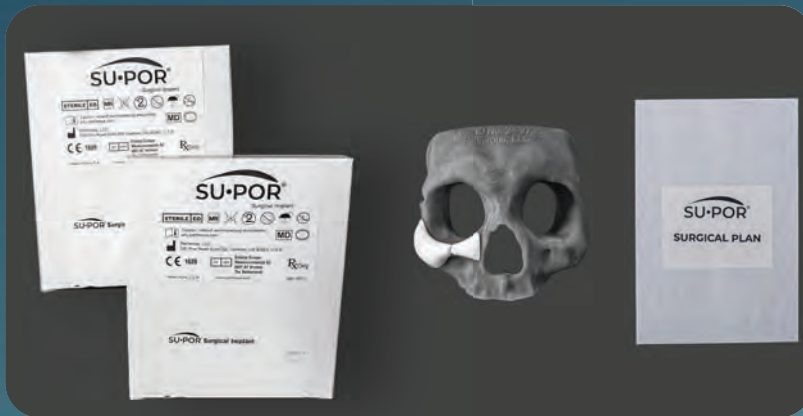
## FACIAL IMPLANT KIT



## DURA-BLOC™ CRANIAL KIT



Su-Por Cranial and Facial Patient-Specific Implants (PSIs) are designed using the patient's own unique anatomy to provide optimal reconstruction and long term results. PSIs are designed by hand using CT scans from the patient. All processes are performed in-house, virtually eliminating supply chain risk. Poriferous offers in-house surgical planning, allowing for resection and reconstruction in a single surgery.



Both the Cranial and Facial Kit include:

Qty (2) Sterile Implants, Qty (1) Non-Sterile Implant template, and Qty (1) Host Bone Model.

### SU-POR Cranial Implant Kit

CAT#	DESCRIPTION
4350 S	Small
4350 M	Medium
4350 L	Large
4350 XL	Extra Large

### SU-POR Facial Implant Kit

CAT#	DESCRIPTION
4353 MF	Midface/Mandible
4353 AU	Augmentation
4353 EA	Ear <b>PATENT PENDING</b>
4353 OF	Orbital Floor
4353 CN	Chin

Dura-Bloc™ is an exclusive feature to the Su-Por PSI program that combines traditional porous implants with our proprietary innovations.

Dura-Bloc™ implants feature a smooth, nonporous membrane layer that reduces the risk of unwanted tissue adhesion while maintaining a porous side to promote desired fibrovascular ingrowth. This makes it easy to remove if necessary.

Dura-Bloc™ implants allow for a 50% lower flange profile for a better cosmetic fit without compromising fixation strength.

The Dura-Bloc™ Cranial kit includes: Qty (2) Sterile Implants, Qty (1) Host Bone Model, and Qty (1) Non-Sterile Implant template.

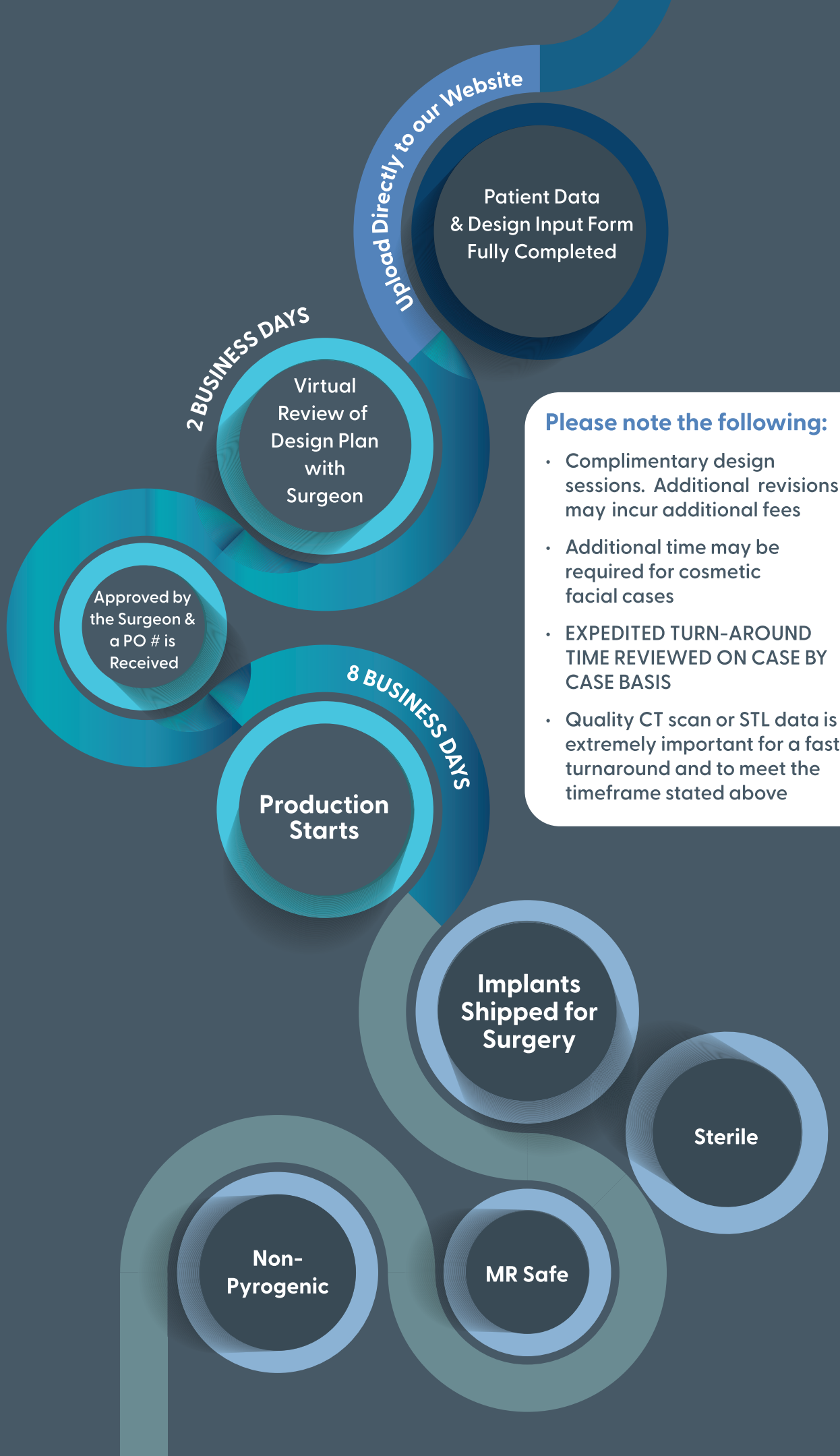
**EXCLUSIVE PRODUCT**

**PATENT PENDING**

### SU-POR Cranial Kit with Dura-Bloc™

CAT#	DESCRIPTION
4359 S	Small w/ Dura-Bloc™
4359 M	Medium w/ Dura-Bloc™
4359 L	Large w/ Dura-Bloc™
4359 XL	Extra Large w/ Dura-Bloc™

# DESIGN PROCESSES



**Please note the following:**

- Complimentary design sessions. Additional revisions may incur additional fees
- Additional time may be required for cosmetic facial cases
- EXPEDITED TURN-AROUND TIME REVIEWED ON CASE BY CASE BASIS
- Quality CT scan or STL data is extremely important for a fast turnaround and to meet the timeframe stated above

# FEATURES & BENEFITS

**precise  
fit**

**variable  
thickness  
to match  
native bone**

**proven  
material**

over 30 years of  
proven clinical  
performance

**direct  
fixation**

**intra-  
operative  
modification**

**virtual  
approval  
process**

**MR Safe**

**sterile,  
non-pyrogenic**

**tissue  
integration**

**fast  
turnaround**

Order ships within  
8 business days  
following design  
approval.

# SCANNING PROTOCOL

The quality of the CT data is essential to the design and manufacture of Poriferous Patient-Specific Implants featuring Su-Por Biomaterial.

*Provided below is the protocol to follow:*

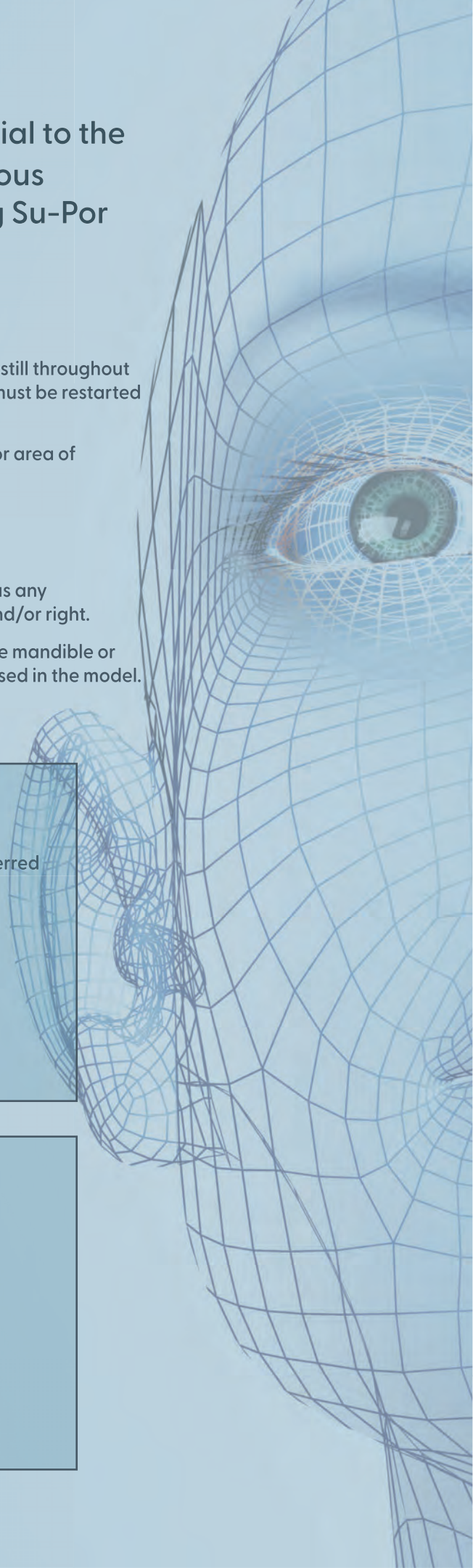
## CT Scanning Guidelines

- The patient must be stabilized and remain completely still throughout the entire scan. If patient movement occurs, the scan must be restarted to achieve the best implant fit.
- The scan should include 2cm beyond the defect area or area of interest.
- Please provide the original DICOM slice data.
- Do not reformat or include viewer software with data.
- Important position or details should be noted as well as any asymmetrical element of the patient to indicate left and/or right.
- The use of a bite jib during the scanning process for the mandible or the maxilla is recommended, otherwise they will be fused in the model.

## Scanning Parameters:

<b>CRANIAL DEFECTS</b>	Acquisition: Axial/Helical
	F.O.V.: Include all areas of interest. Additional 20-25 mm and above and below is preferred
	Gantry Tilt: 0
	Spacing: Overlapping
	Slice thickness: 1-1.25mm(preferred) (3mm Max) • Algorithm: Standard •
	MA: 170ma/280kvp or lower
	Time: 2 seconds or less

<b>FACIAL DEFECTS</b>	Acquisition: Axial/Helical
	F.O.V.: Include all areas of interest
	Gantry Tilt: 0
	Spacing: Overlapping
	Slice thickness: 1-1.25mm(preferred) (1.5mm Max)
	Algorithm: Standard
	MA: 120-180ma/120kvp or lower Time: 2 Seconds or less



Visit [www.poriferous.com](http://www.poriferous.com) to learn more about our:

- **Clinical References**
- **Partnership for DoD and VA Sales**
- **Reimbursement Codes**
- **Instructions for Use (Off-The-Shelf and Patient-Specific variations)**



**Poriferous.com**

sales@poriferous.com

877.631.1954 (Toll-Free)

770.683.3855

535 Pine Road, Ste 206

Newnan, GA 30263 USA



International and US Patents apply (US10,687,945, US29/835,738, 202216159, 015000971-0002, BR302022005770-3, 015000971-0001, 18/057,378, 2022398612, BR112024008629-1, 202280078196.9, 22840507.2, US12,127,936, 3185916, HK1240514, US12,115,072, 3795183, 602015059530.0, 502020000100870, US10,952,857, 2020264509, 602020033319.3, 502024000043621, US9,724,198, 3193785, US10,758,355, 3437589, 60 2015 017 080.6, 502023000016434, 2020240099, 602020022282.0, 3941543, HK40068318, 502024000006507, US11,491,029, 2020209223, US17/597,859, PCT/US2023/079536, US18/508,059, US63/563,869, 2022234745, BR112023017652-2, US11,491,029, 2020209223, BR112021013846-3, 20741526.6, 62021043038.0, US9,636,202, US17/711,174, US18/784,442, 2022249377, BR112023018909-8, 22719418.0, BR112021021916-1, 42021035818.0, 20191317.5, US18/057,378, 2022398612, BR112024008629-1, 202280078196.9, 22840507.2, BR302022005770-3, US29/835,738). Copyright 2015-2025. All rights reserved. The Su-Por service mark is owned by or used under the license and authority of Poriferous, LLC. Su-Por is a registered trademark of Poriferous, LLC. 0160 REV K.