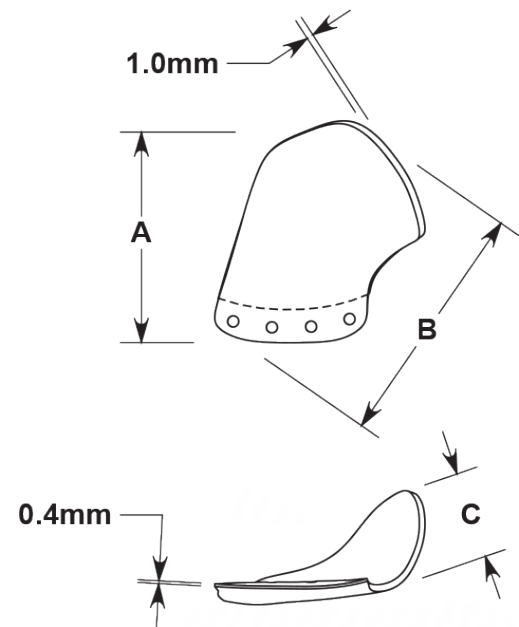
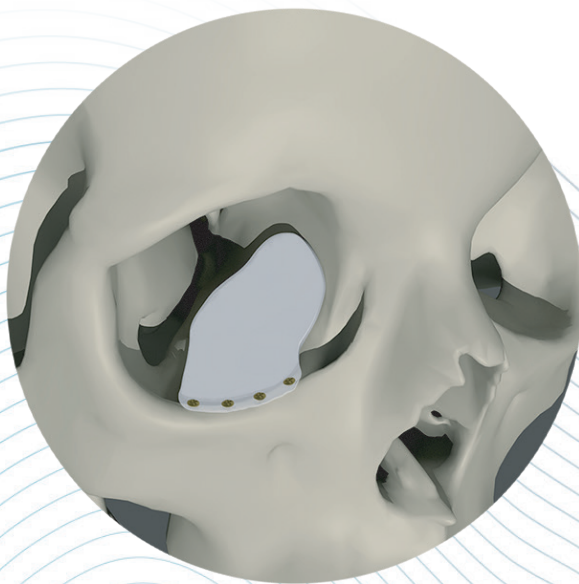


### Surgical Implants

USA and International Patent Protected

- For medium to large orbital floor fractures
- "Off-the-shelf" anatomic design based on CT scan data
- Implant bends and holds desired shape without heating
- Only 1mm thick
- Composite structure comprised of a 0.6mm porous bone-side layer heat bonded to a non-porous 0.4mm plate providing rigidity while extending over the orbital rim for smooth transition to bone.
- Eyelets accommodate screws
- Fixation screws or sutures can be placed in any desired location
- Easy to trim with scissors or scalpel
- Individually packaged, MR Safe, Sterile 5 Year Shelf Life



CAT#	Description	A	B	C
4452	Small - Right	30mm	35mm	13mm
4453	Small - Left	30mm	35mm	13mm
4456	Large - Right	34mm	37.5mm	16mm
4457	Large - Left	34mm	37.5mm	16mm

