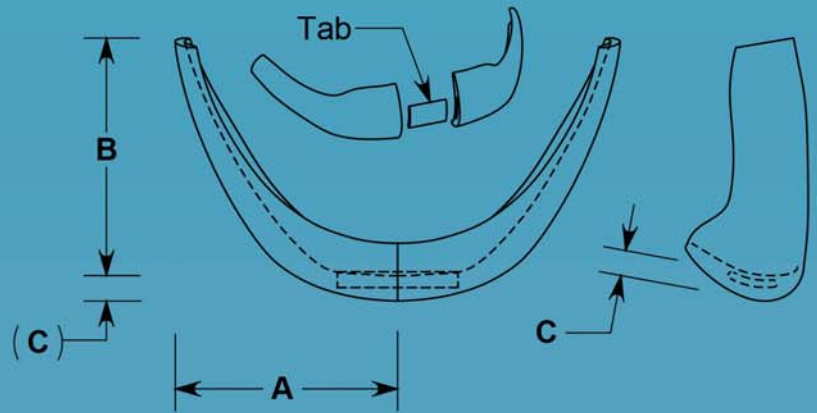
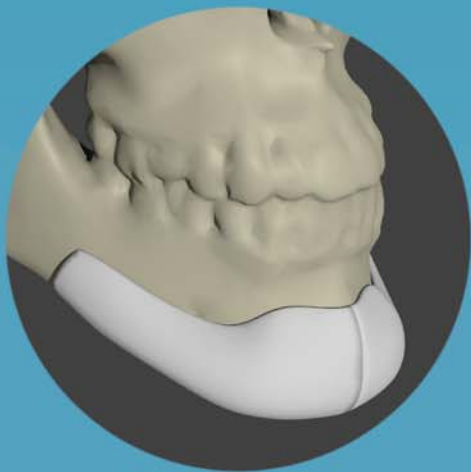


Round Extended Chins

- Provides rounded tri-dimensional projection (anterior, lateral, and inferior)
- Designed to accommodate the mental nerve foramen
- Two-piece design allows for easy insertion and placement
- Un-matched shape retention and suturability
- Fully porous material for tissue ingrowth
- Implant bends and holds desired shape without heating
- Screws or sutures can be placed in any desired location
- Easy to trim with scissors or scalpel
- Individually packaged, MR Safe, Sterile, 5 Year Shelf Life



CAT#	Description	A	B	C
4259	Small	45mm	47mm	3mm
4260	Medium	45mm	47mm	5mm
4261	Large	45mm	47mm	7mm

