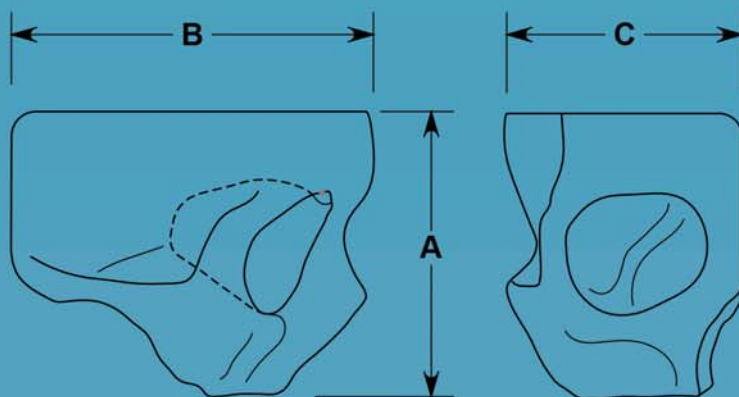
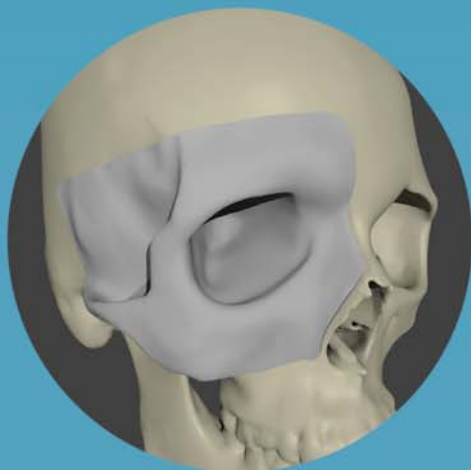


- Designed to replace non-load bearing bony structures of the orbit
- May be modified with a scalpel, scissors, or burr to fit a variety of defects
- Unmatched shape retention and suturability
- Fully porous material for tissue ingrowth
- Implant bends and holds desired shape without heating
- Screws or sutures can be placed in any desired location
- Individually packaged, MR Safe, Sterile, 5 Year Shelf Life



CAT#	Description	A	B	C
4226	Left	77mm	97mm	63mm
4227	Right	77mm	97mm	63mm

