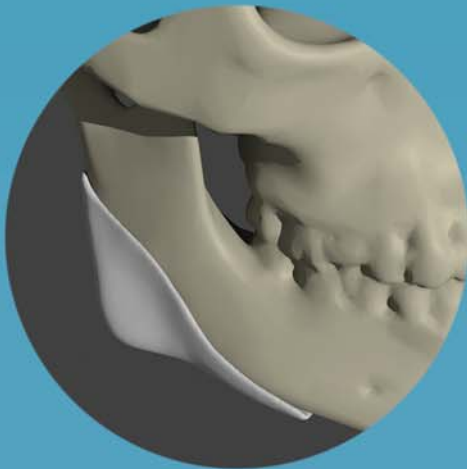
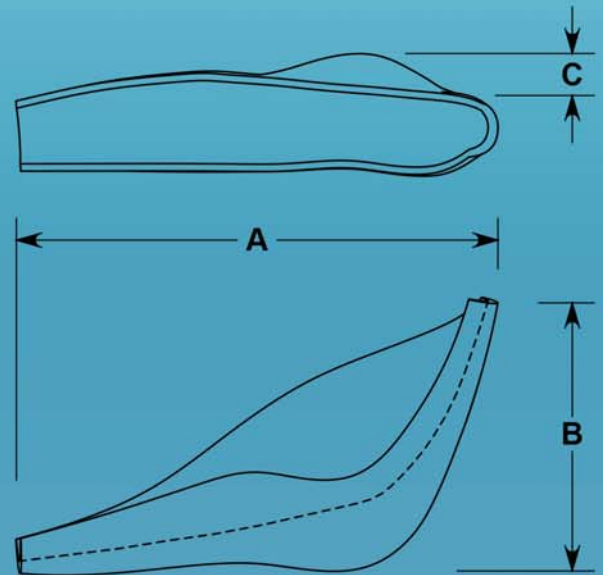


## SP Mandibular Angle

- Subtly augments the mandible
- Anatomic shape mimics the shape of the inferior and posterior borders of the mandibular angle
- More natural fit against the mandible with minimal need for reshaping
- Fully porous material for tissue ingrowth
- Implant bends and holds desired shape without heating
- Screws or sutures can be placed in any desired location
- Easy to trim with scissors or scalpel
- Individually packaged, MR Safe, Sterile, 5 Year Shelf Life



CAT#	Description	A	B	C
4150	Small - Left	65mm	35mm	3mm
4151	Small - Right	65mm	35mm	3mm
4152	Medium - Left	65mm	35mm	7mm
4153	Medium - Right	65mm	35mm	7mm
4154	Large - Left	65mm	35mm	11mm
4155	Large - Right	65mm	35mm	11mm

