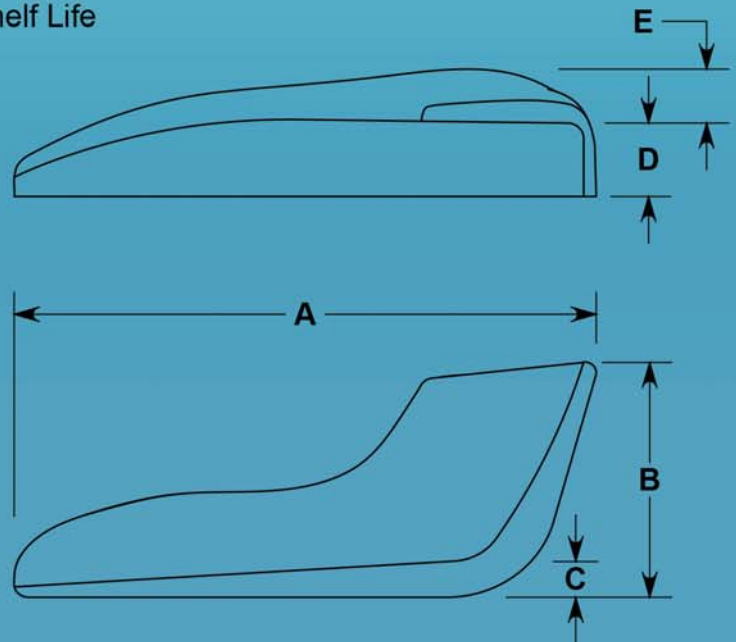
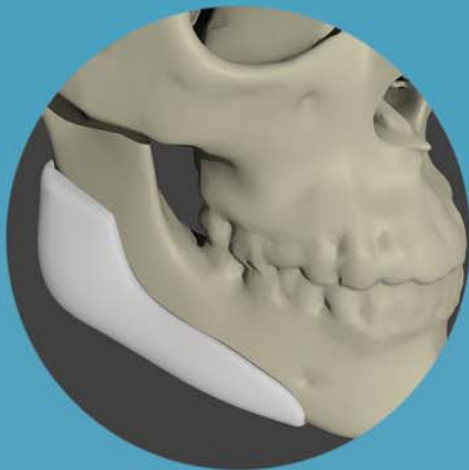


Ramus of the Mandible

- Augments the ramus of the mandible
- Un-matched shape retention and suturability
- Fully porous material for tissue ingrowth
- Implant bends and holds desired shape without heating
- Screws or sutures can be placed in any desired location
- Easy to trim with scissors or scalpel
- Individually packaged, MR Safe, Sterile, 5 Year Shelf Life



CAT#	Description	A	B	C	D	E
4095	Large 5mm - Left	79mm	32mm	5mm	10mm	7mm
4096	Large 5mm - Right	79mm	32mm	5mm	10mm	7mm

