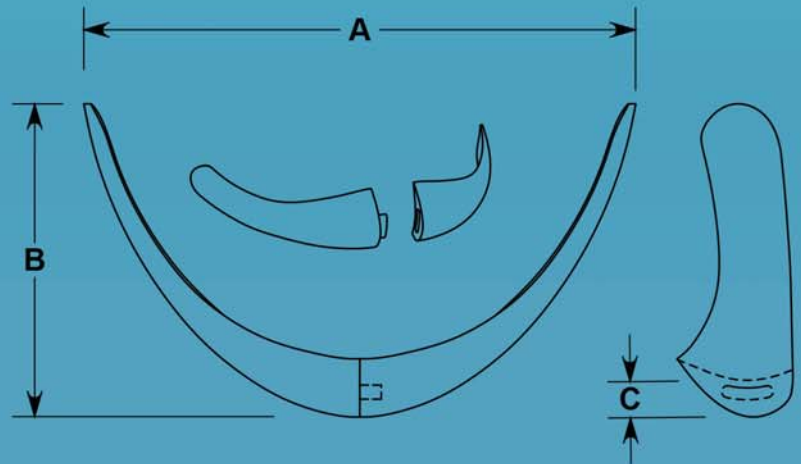
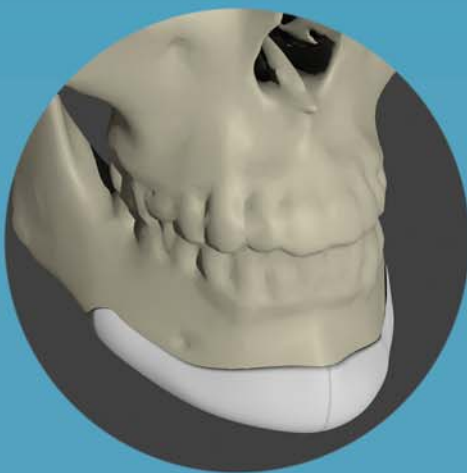


Contoured Two-Piece Chin

- Excellent anatomical fit to the bony anatomy
- Designed with a gradual taper towards the ramus and concave posterior surface
- Two-Piece design allows for easy insertion and placement
- Once in place, connect pieces together for proper alignment
- Fully porous material for tissue ingrowth
- Implant bends and holds desired shape without heating
- Screws or sutures can be placed in any desired location
- Easy to trim with scissors or scalpel
- Individually packaged, MR Safe, Sterile, 5 Year Shelf Life



CAT#	Description	A	B	C
4088	Small	72mm	42mm	3mm
4089	Medium	74mm	42mm	5mm
4090	Large	78mm	50mm	7mm
4091	Extra Large	80mm	55mm	9mm

