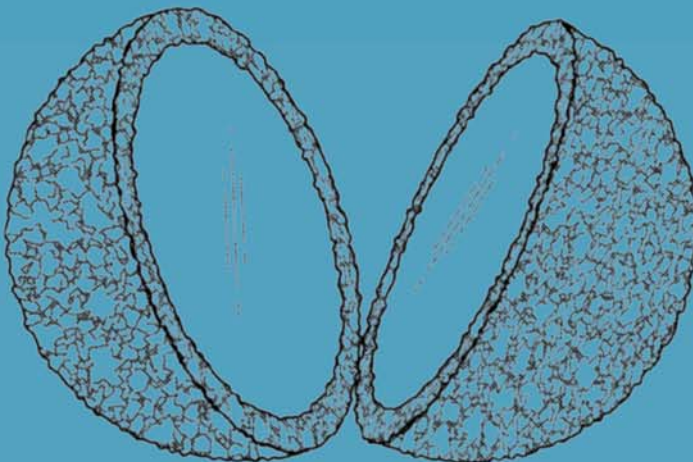


Cor-Tec Spheres

Designed with Peter Dolman, M.D.
US20160038289

- Restores volume of the orbit following enucleation and evisceration procedures
- Composite ocular implant with a thin 3.5mm porous cortical layer surrounding a non-integrating non-porous core
- Tissue ingrowth potential is limited to the thin porous outer layer
- Non-porous core eliminates the potential for a center space void of fibrovascular ingrowth
- Su-Por biomaterial offers superior, unmatched suturability
- Wrapping of implant is optional, as extraocular muscles may be sutured directly to sphere
- Enucleation Introducer provided sterile with each implant
- Individually packaged, MR Safe, Sterile, 5 Year Shelf Life



CAT#	Diameter
4042	16mm
4043	18mm
4045	20mm
4047	22mm

