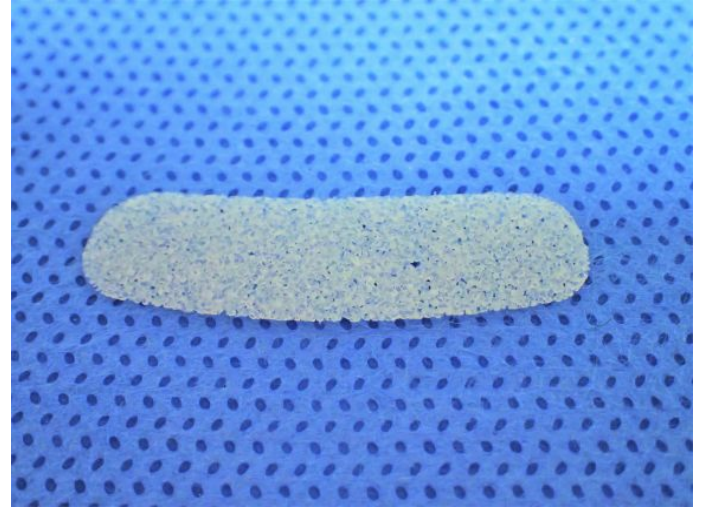
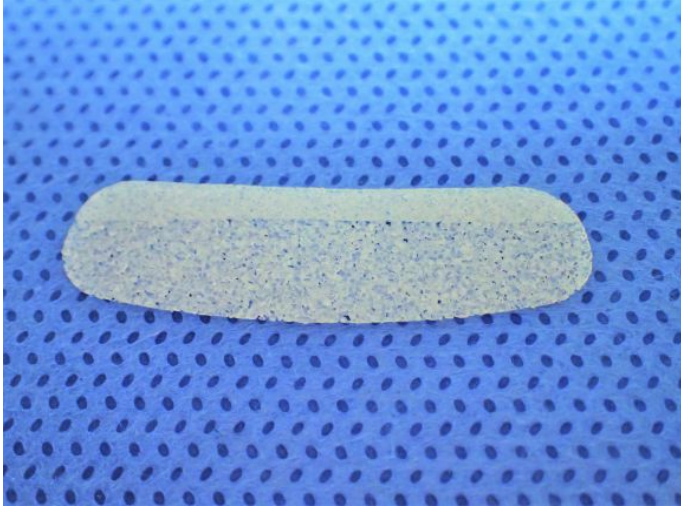


# PORIFEROUS Polyethylene Implants Featuring SU-POR<sup>®</sup> Biomaterial.

NEW PRODUCT

Poriferous is pleased to offer the following new implant



## Su-Por Lower Eyelid Spacer Implant

Designed with Michael A. Burnstine, M.D.

"The Su-Por Lower Eyelid Spacer is an excellent addition to the management of patients with symptomatic paralytic ectropion. Advantages of this implant include: a thin (tissue-like) profile, tissue biointegration, and greater eyelid stability. The implant is placed inferior to the tarsus under no tension." The implant is available with and without a strip.

*-Michael A. Burnstine, M.D.*

Cat #	Description	Dimensions
4436	Lower Eyelid Spacer	27mm x 16mm x .45mm
4437	Lower Eyelid Spacer w/Superior Strip	27mm x 16mm x .45mm



Scan for video  
demonstration



For questions or additional information, please call customer service at (877) 631-1954, or e-mail to [sales@poriferous.com](mailto:sales@poriferous.com).

All content herein is protected by copyright, trademarks, and other intellectual property rights owned by or licensed to Poriferous, LLC. or its affiliates unless otherwise indicated, and must not be redistributed, duplicated, or disclosed, in whole or in part, without the express written consent of Poriferous, LLC. This material is intended for health care professionals. Distribution to any other recipient is prohibited. Poriferous, LLC. does not practice medicine. The treating surgeon is responsible for determining the appropriate treatment, technique(s), and product(s) for each individual patient. Check for country product clearances and reference product specific instructions for use. For Poriferous's privacy statement, complete product information, including indications, contraindications, warnings, precautions, and potential adverse effects, see the package insert or visit our website at [www.poriferous.com](http://www.poriferous.com) or call 770.683-3855. Form No. QF-171106-1 - Rev A

**PORIFEROUS, LLC.**

**(877) 631-1954**